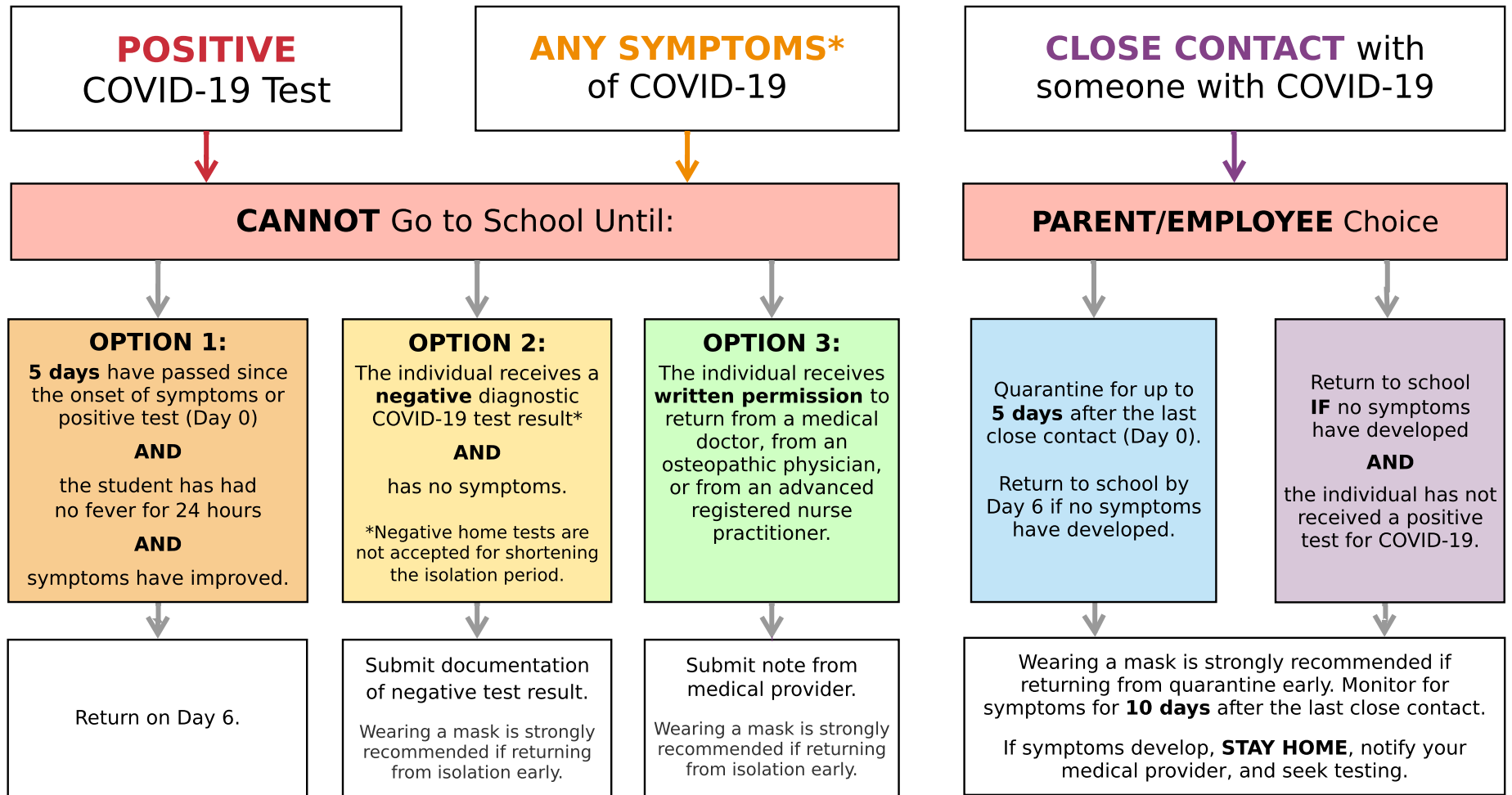


Alachua County Public Schools COVID-19 Decision Flow Chart



People with COVID-19 have had a wide range of symptoms reported - ranging from mild symptoms to severe illness. Possible symptoms include: Sore throat, fever (100.4°F or higher), cough, loss of taste or smell, chills, shortness of breath or difficulty breathing, fatigue, headache, muscle pain or body aches, congestion or runny nose, and nausea, vomiting, or diarrhea, not explained by another known condition.

Close contact is defined as being within 6 feet of someone with COVID-19 for a total of 15 minutes or more.

The Protocols for Controlling COVID-19 in School Settings were created by the Florida Department of Health (DOH Rule 64D-3.049)

Last Updated September 2, 2022. Learn more at www.sbac.edu/covid19