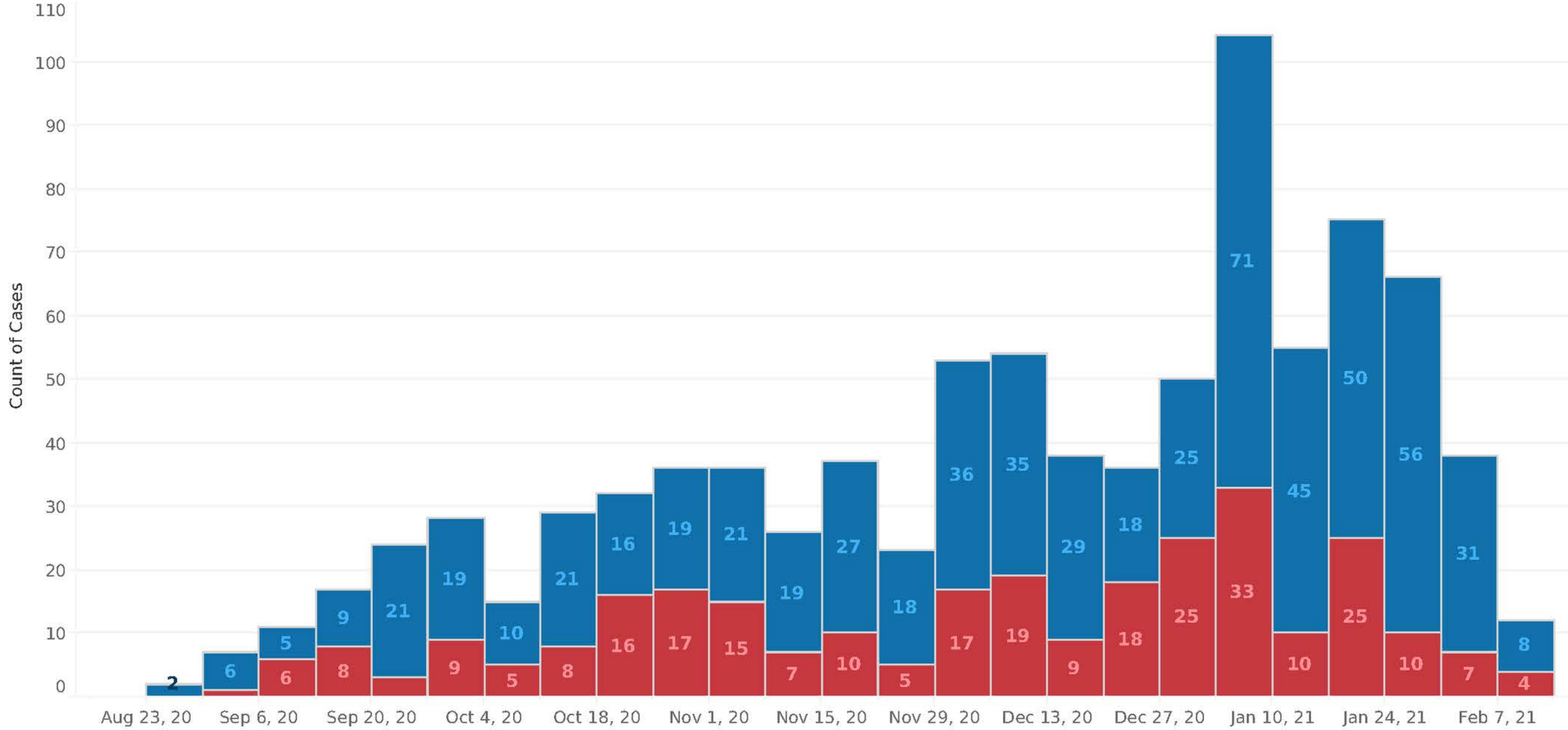


COVID RESPONSE TEAM PROGRESS REPORT

School Board Meeting
Tuesday, February 16, 2021

COVID DATA UPDATE: SCHOOL TRENDS



Student Cases

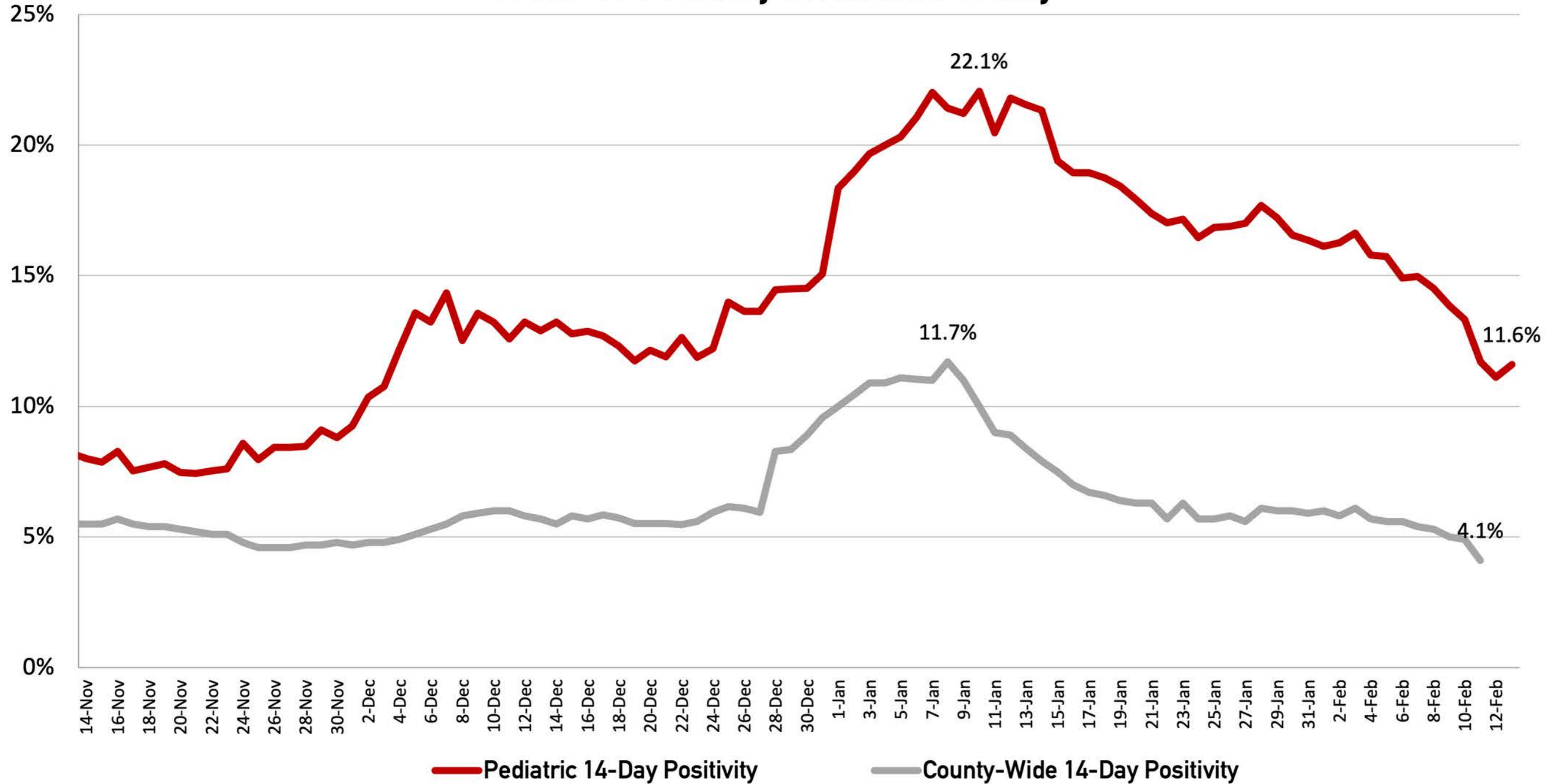
Staff Cases

Date

WWW.SBAC.EDU/DASHBOARD

COVID DATA UPDATE: COMMUNITY TRENDS

COVID-19 Positivity in Alachua County



Percent Positive in the last 14 days in Alachua County.
Percent Positive in the last 14 days for Alachua County residents less than 18 years of age. This data reflects all pediatric test results and is not limited to students in Alachua County Public Schools.

PROGRESS REPORT: WHAT'S NEW

PPE & SUPPLIES DISTRIBUTION

- 40,000 **KN95 masks** packed & delivered to schools
- Streamlined **Request Form** to distribute and track PPE/supplies



PROGRESS REPORT: WHAT'S NEW

COVID-19 VACCINE CLINICS

Co-hosted by UF Health & the Department of Health – Alachua



138

65+ Employees

345

65+ Retirees

75

Health-Related
School Staff

38

65+ Family of
Employees

SITE VISITS & STRATEGY SUPPORT

- **Guided by Monitoring Plan**
- **About 2 hours (on campus)**
- **School data (cases & surveys)**
- **Meeting with Principal & APs**
- **Campus Tour**
- **Observation of lunch or buses**
- **Meeting with teachers, custodians, nurses, office staff, etc.**
- **Recommendations & Requests**

VISITS SO FAR

- ✓ **Parker Elementary**
- ✓ **Westwood Middle School**
- ✓ **Lincoln Middle School**
- ✓ **Gainesville High School**

BEST PRACTICES & VULNERABILITIES

Best Practices

- Age-appropriate signage on campuses
- Maximizing Keeping classes and cohorts together at all times, including lunches
- Allowing outside partners to provide additional or special requests of PPE
- Documents and resources available in multiple languages for students and parents



BEST PRACTICES & VULNERABILITIES

Vulnerabilities

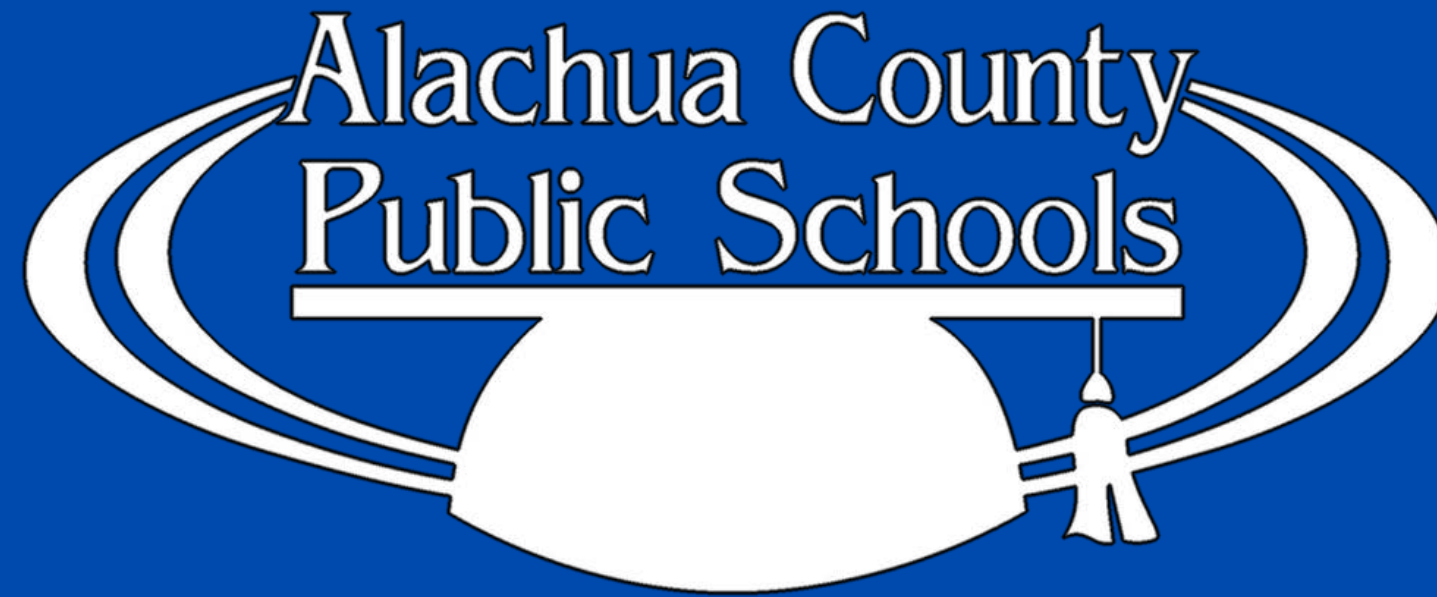
- Roles, responsibilities, and expectations need clarity
 - "Who do we call for...?"
- Social Distancing needs creative solutions
 - Most difficult in older/smaller buildings
- Workload is overwhelming time and personnel
 - Other school operations suffer
- COVID Fatigue
 - "...my staff have hit the wall".
 - Still 120 days left!



Developing a **Sustainable** COVID Response

- Continued **visits and support** for schools
- **Strategic** use of new and existing resources
- Guided by **best practices** from the CDC, the Department of Education, and each other





COVID-19 RESPONSE TEAM

Reflect. Respond. Reinforce. Recover.