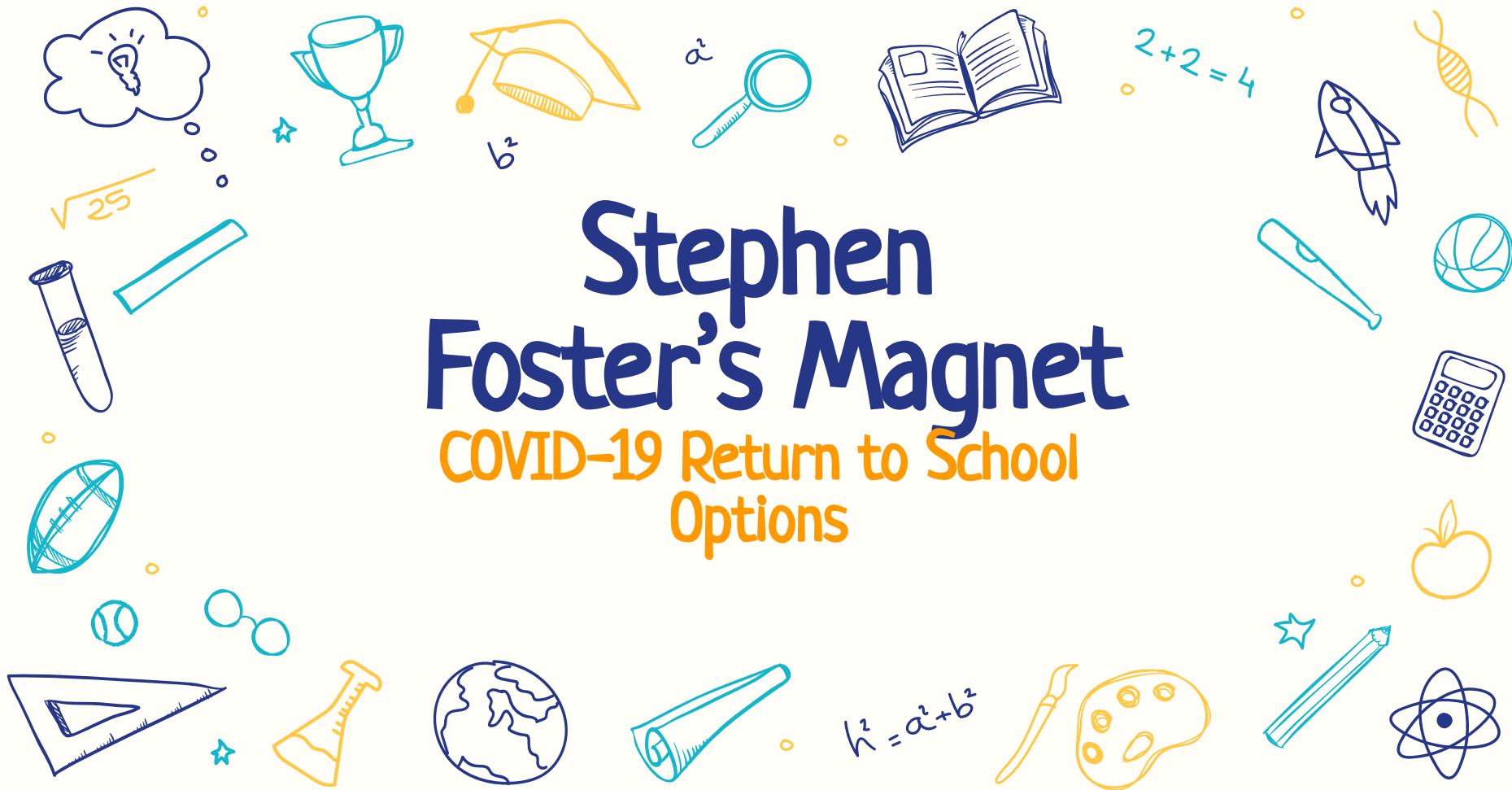


# Stephen Foster's Magnet

## COVID-19 Return to School Options





# Reopening School

This week, the district will be sending out a survey allowing families to identify the instructional delivery that will best suit the students' needs this Fall as we continue to work through this pandemic.

In order to keep the integrity and rigor of magnet programs in our elementary schools, the following options are available for students who have earned a seat for this experience.

We ask that parents choose the program that best fits their current situation and health concerns.



# Foster's Magnet Instructional Options

-01-

## Traditional ("Brick and Mortar")

Using enhanced" safety precautions students are back in the classroom with peers and teachers.

-02-

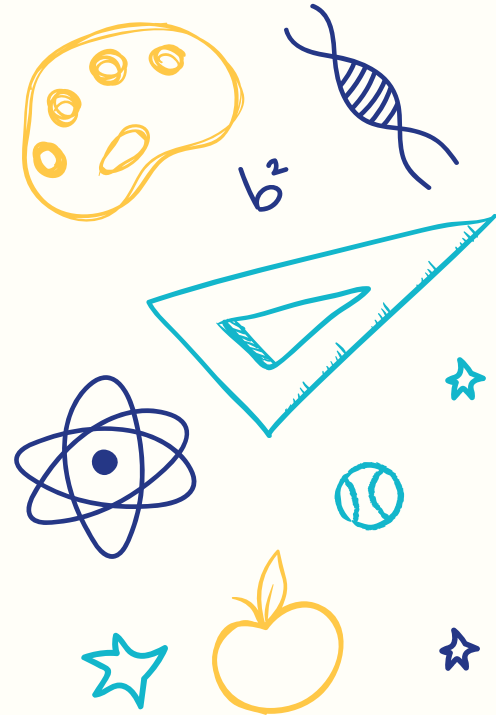
## Digital Academy

A live at-home option facilitated by a Foster teacher during school hours.

**All magnet students will receive a curriculum that covers the FL standards for their appropriate grade level and be able to participate in extension learning in their selected environments.**

# Alachua eSchool

Students enrolled in Alachua eSchool would receive virtual instruction from eSchool teachers which allows for more flexibility, particularly in terms of a schedule. This option will separate your student from the magnet program at Stephen Foster and not secure your magnet seat.





# Foster's Traditional Magnet

Families can expect the following from our In-Person program:

- Enhanced safety precautions (hand sanitizing, hand washing, mask, routine cleaning, etc.)
- Collaborative instruction across the curriculum
- Frequent hands on learning opportunities in all content areas.
- STEM (Science, Technology, Engineering, Mathematics) instruction, with specialized materials and designated STEM teacher
- In person extension opportunities and clubs (Robotics, Olympiad, Media, etc).
- Individualized, immediate feedback/support and enrichment with magnet teachers.
- Social emotional instruction with Leader in Me and social development with peer to peer interaction and socialization.

The slide features a decorative border consisting of numerous small, five-pointed stars in yellow and blue, scattered across the top and sides. On the left and right sides, there are also larger, stylized line-art rockets in blue, pointing upwards.

# Foster's Digital Academy

Families can expect the following from our Digital program:

- At home instruction using live lessons with a Foster teacher (not necessarily a magnet teacher) .
- Students engaged in full school day instruction following the typical elementary schedule.
- Curriculum is the same as traditional, in-person instruction with modified projects.
- Hands on learning, when possible and with supplies at home.
- STEM instruction.
- One-on-one scheduled teacher conferencing for feedback
- Collaboration based around online interaction with peers with facilitating teacher.
- Social emotional instruction with Leader in Me and virtual peer interaction.

# Your Response is Vital

We understand that this pandemic has changed the way in which students are provided the opportunity to learn; at the same time, we are ready and willing to make the necessary accommodations in order for all students to receive the quality education they rightfully deserve.

**Please review the options and choose the program that best fits your student's current situation and health concerns.**



# THANKS



Do you have any questions?

+(352) 955-6706

<https://www.sbac.edu/foster>

CREDITS: This presentation template was created by **Slidesgo**, including icons by **Flaticon**, and infographics & images by **Freepik**.

