



EAGLE

NEWSLETTER



September 2022 Edition

www.sbac.edu/irby

From the Principal's Desk:

We are off to another great school year at W.W. Irby Elementary School! I would like to invite you to our annual Open House event on September 8th. Open House is being held in person this year. We will be offering two sessions for your convenience, 5:30-6pm and 6-6:30pm. You only need to plan to attend one session, unless you have multiple children attending Irby. The attached calendar has additional information and other important dates to note.

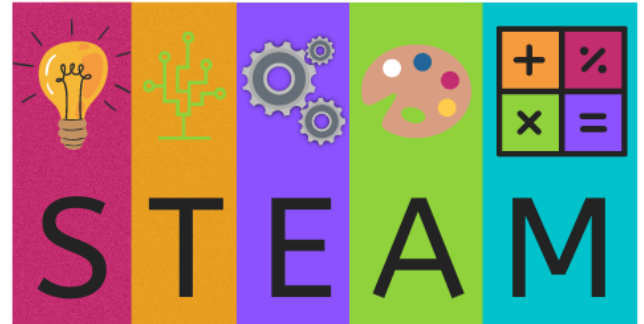


F.A.S.T.

Our school will be giving two different types of assessments this year.

FAST stands for Florida Assessment of Student Thinking. This is a state-required computer-based assessment. The goal is to monitor progress from the beginning of the year to the end of the year through three separate sessions. This will provide timely information to teachers and parents about each student's progress in both reading and math. The information will be used to guide instruction to meet the needs of all students in the best ways.

DIBELS stands for Dynamic Indicators of Basic Early Literacy Skills. This program is used in grades K-5 district-wide. It consists of a series of short tasks administered one-on-one to measure critical reading skills. Like a thermometer to take your child's temperature, it provides a quick indicator of your child's "general health." These quick DIBELS tasks provide teachers with information about your child's reading health and how well he or she is progressing on particular early reading skills.



STEAM Academy Update

Irby Elementary is proud to announce that beginning this year, all K-2 Irby students will receive an iPad under a new STEAM (science, technology, engineering, arts and mathematics) initiative. The students will be able to take the devices home to complete homework and other assignments, and those without Internet access will also receive hotspots. For the first 9-week period, students will be learning responsible handling, digital citizenship and appropriate usage before devices will be issued for home use.

Monthly STEAM Challenge

Create a model of a building or shelter.

- You may use any items from home for your creation.
- You may work alone or with a family member.
- Remember to think like an inventor, be a problem solver, use your imagination, and have fun!
- Email us a picture of your family project for us to share on the morning announcements or in future newsletters.

REMINDER



- Parent/Doctor Notes: Please remember to send in a note if your child is absent.
- Have you checked out our school website: sbac.edu/irby >>> Here you will find lots of helpful information about our school, academics, and student services.
- Students play outside everyday (weather permitting). Please ensure that your child is dressed appropriately and wears closed toed shoes.
- Have you been receiving text alerts & emails? If not, please contact our front office at 386-462-5002 to make sure your contact information is up to date.
- When dropping off/picking up in the car line, please do not get out of your car. If you have a need to get out of your car, please utilize an available parking space.

Being a member of the PTA does not mean you have to attend a bunch of meetings or volunteer at a specific number of events. You decide how much you would like to participate. By becoming a member of the PTA, you are showing your support! You can join here: <https://bit.ly/3e1ob0H>
For more information please email: irbypta2223@gmail.com

Birthday Marquee: For just \$10, you can have your child's name and birthday displayed on the school marquee. Reserve your spot by going to: <https://bit.ly/3e0Uc9a>

PTA Meeting: The next PTA meeting will be held virtually on 9/8 at 4:30pm in the cafeteria.



Does your child need homework/tutoring help?
ACPS Offers After School Online Tutoring at www.sbac.edu/tutor for elementary students Monday - Thursday from 3pm-4pm and 6pm-7pm.



We need YOU! Looking for a way to get involved and support students while getting paid? We invite you to consider becoming a substitute. Please give Mrs. Davis a call at 386-462-5002 for more information.



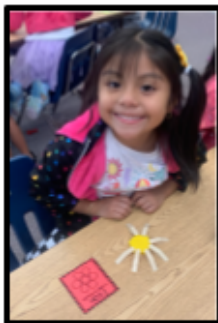
Lending Library: We have a new lending library that has been donated by PTA. It is located near the front of the school. Students and families are welcome to borrow books and return them when finished.

Welcome To STEAM

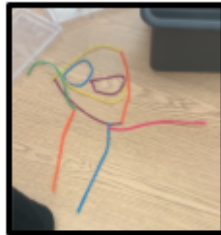


My name is Allison Harris, and I am so excited to be the STEAM teacher at Irby Elementary this year! STEAM is an acronym that stands for Science, Technology, Engineering, Art, and Math. Each week, your children will be participating in fun and exciting STEAM challenges that incorporate all of these key academic subject areas. STEAM activities also help students grow in problem solving, leadership skills, communication, teamwork, and flexibility in thinking. I'm looking forward to a great year together with your students! Check the monthly newsletter for STEAM Challenge ideas that you can complete at home as a family!

Take a look at what's been happening in the STEAM Lab!



Kindergarten engineered different items using STEAM task cards and a variety of building materials.



First grade used Wiki Sticks to design and build different items.

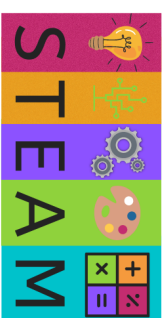


Second grade worked in teams to build the tallest cup tower in 10 minutes. The second time it was much more challenging since they couldn't use their hands!





SEPTEMBER 2022



SUNDAY	MONDAY	TUESDAY	WEDNESDAY	THURSDAY	FRIDAY	SATURDAY
28	29	30	31	1 Hispanic Heritage Month Suicide Prevention Month	2	3
4	5 Holiday- Labor Day 	6	7 School Spirit Day-Wear your favorite Irby Gear	8 PTA Meeting 4:30pm Title 1 Annual Meeting 5pm Open House 5:30pm or 6pm National Physical Therapist Day	9 Thank a Police Officer Day- Irby's Recognition Day	10
11	12	13	14 School Spirit Day-Wear your favorite Irby Gear	15 Interim Reports Available in Skyward Family Access	16	17
18 Thank a Police Officer Day (Irby will recognize on the 16th)	19	20	21 School Spirit Day-Wear your favorite Irby Gear	22	23	24
25	26	27	28 School Spirit Day-Wear your favorite Irby Gear	29	30	1

September Character Trait: Being **responsible** for what I say and do

W. W. Irby Elementary School

EST. 1992



HOME OF THE EAGLES



Welcome Eagle Families!

Welcome to W. W. Irby Elementary School! I hope this information will be helpful to you as we get set for a new school year. I am looking forward to working with your family and collaborating to provide the best educational experience for your child(ren).

This information has been prepared to acquaint parents and students with school policies, regulations, and procedures for the 2022-2023 school year. I hope that you will read this material carefully and that you will refer to it often. It is suggested that you keep this information in a convenient place and use that place to keep other school information and important notices which will be sent home during the year. I am looking forward to a great year!

I wish you well!

Mrs. Floyd

The School Day

The school hours are from 7:45 a.m. until 1:52 p.m. on Monday, Tuesday, Thursday, and Friday. School hours on Wednesday are from 7:45 a.m. until 12:37 p.m. Supervision of children begins at 7:15 a.m. Children should not arrive before 7:15 a.m.

Arriving at School

For the first two days of school, August 10th and August 11th, parents/guardians are welcome to walk their child to class. **Beginning on August 12th, parents/guardians should say their 'goodbyes' prior to students entering the building.** Pre-K students will then be escorted to class by a staff member. Students in Kindergarten and 1st grade should enter Building 2 and 2nd grade students should enter Building 1. If at any time a student (in any grade) needs assistance getting to class, there will be staff members on hand to assist.

All students eating breakfast at school should go directly to the cafeteria. All other students should go directly to their classroom when they arrive at school (no earlier than 7:15am).

The late bell rings at 7:45 a.m. Students arriving after 7:45 a.m. will need to be signed in at the office by a parent/guardian to check in and pick up a tardy slip before reporting to class. **Any**

student not in class by 7:45am will be marked tardy. Regular, on time attendance is essential to support the work of our teachers and staff.

Breakfast & Lunch

Free for everyone, serving times, end time for breakfast, what a parent needs to do to eat lunch with their child.

Attendance

A full school term for the State of Florida is 180 school days for students. Absences are recorded each day. Regular attendance is required by Florida Law; Section 232.09. The statute states, "Each parent of a child within the compulsory attendance age shall be responsible for such child's school attendance as required by law." Parents are requested to report reasons for absences by sending a note to the teacher following the child's absence.

Leaving School Early

Students are not permitted to leave during the school day without being checked out through the office. The parent/guardian must come to the office and sign the child out. The child will then be called from the class. In an effort to minimize disruptions in the classroom, we ask that early checkouts be reserved for emergency situations only and that it be done no later than 1:30pm MTRF or 12:15pm on Wednesdays. Please plan to make all doctor appointments, etc. after school hours. We thank you for your cooperation.

If someone other than the parent/guardian is to pick up the child, make sure the office has written authorization from the parent/guardian..It is the parent's responsibility to notify any after-school daycare when a child is absent or has gone home directly from school.

Dismissal Each Day

At the conclusion of each instructional day, students will be escorted by a staff member to their applicable dismissal area on campus.

Car Riders: All automobile traffic must use the car area in front of Building 1. Cars should not line up for dismissal until 30 minutes before dismissal. Single-lane traffic only is permitted in the car pick-up area. All cars should have a sign with their child's name on it issued from the front office. Please place this sign in your windshield on the passenger side. If you do not have a sign, please stop by our main office to receive one. Without a sign, a picture ID must be presented in order for a child to be released. Cars will be directed to pull forward to a given number to receive their child. Students waiting to be picked up will remain inside the building until called to exit the building. Students will then load from their appropriate number with the assistance of a staff member. We ask that you remain in your car during this time and pull all the

way forward to your corresponding number. Cars are not permitted to pick up students from the bus circle during dismissal times.

Bus Riders: Student bus riders are expected to follow the rules as outlined in the Student Code of Conduct. Students who repeatedly demonstrate difficulty with appropriate behavior while riding the bus may have their riding privilege suspended.

CHANGING PLANS FOR GETTING HOME

Please make advance plans for getting home on rainy days or when the routine for getting home changes. A written note **must be** sent with your child explaining how he/she is to get home, if there is a change from their regular routine. A fax and/or email may be sent if necessary, but you will need to call to be certain that we received the fax and/or email. This policy is in effect to ensure the safety of our children. Due to the difficulty of verifying a parent/guardian's identity on the phone, we ask that requests to change the way a child goes home not be made via phone. We thank you for your understanding and for adhering to this safety measure as we take every precaution to keep our children safe.

GUIDELINES FOR STUDENT CONDUCT

A Student Code of Conduct book will be sent home at the beginning of the year. Please review this information with your child and return the page at the front of the book requiring signatures. Parents are urged to help their children understand the expectations set forth by Irby Elementary School and the School Board of Alachua County. The purpose of the behavior guidelines is to ensure a happy, cooperative, safe environment for learning. All students and adults are expected to abide by the rules set forth in the School Board of Alachua County. Failure to display appropriate behavior will be addressed per board policy.

"Irby Eagles SOAR!"

****Irby is now a PBIS kid School ~ Positive Behavior Intervention Support School.**

Safety

Own your learning

Act responsibly

Respect

Toys & Games

Toys, electronic devices, and games should be left at home unless the teacher gives prior permission for them to be brought to school.

Playground

Students will participate in physical activity each day. It is important that students wear comfortable, closed-toed shoes for their safety and in accordance with the district's elementary dress code policy.

Resource Classes

Each student participates in a regularly scheduled class for art, music, physical education, and media each week. Parents should help children select shoes and clothing appropriate to the activity of the day.

Lost & Found

The school maintains an area for claiming lost belongings. **Parents should mark ALL of their children's things with a permanent marker.** The most frequently misplaced articles include: jackets, sweaters, sweat shirts, and lunch boxes. Items marked with the child's first and last name are easy to return to their owner.

Getting the News

A newsletter with events and information is sent home each month and also available on Irby's website. The Alachua County Public School's communication office also provides a system for getting pre-recorded phone messages and texts sent out to families. If you are not receiving these messages please contact the school.

Visiting the School

Arrangements to visit a classroom should always be made at least 24 hours in advance with the teacher. This can be done through a written note or by calling the teacher at school at 386-462-5002. For the safety of our school community, all visitors and volunteers are requested to check in through the front office upon arrival on campus. Visitors/volunteers must comply with the district's current mask policy, if applicable. Volunteers **must** have a volunteer form on file 48 hours prior to volunteering. This form should be completed annually and can be found at: <https://apps.raptortech.com/Apply/MTU3OmVulVVT>

Parents/guardians will be permitted to eat lunch with **only** their child, in the designated outside picnic table area, during their child's assigned lunch time.

Parent-Teacher Conferences/Meetings

Communication and collaboration is essential to support your child's learning and academic growth. Conferences may be requested by either parents or teachers. Parent-teacher conferences should be scheduled in advance. If a parent wishes to set up a conference time, he/she may contact the school. We want everyone to feel comfortable, so meetings/conferences can occur in person, by phone, or video conferencing, depending on the preference of a parent.

Special Occasions

If you wish to bring something for your child's birthday, you may send a treat to share with your child's entire class. Arrangements should be made with the child's teacher **at least 24 hours in advance. Items brought in for the entire class must be store bought.**

Invitations to private parties, unless issued to every student in the class, may not be distributed at school. Deliveries for students (flowers, balloons, etc.) will not be accepted at school. Such deliveries can be a disruption of the class as well as a problem for the child going home.

Reporting Student Progress

Interim reports, as well as report cards, will be made available via **Skyward Family Access** at regular intervals throughout the year.

Student Emergency Cards

It is imperative that each child's emergency card have *current* names and telephone numbers of people to contact in case of an emergency and who are allowed to pick up your child. If any of the information changes, please notify the school office immediately.

Parent Teacher Association

Our Parent Teacher Association does a tremendous job of promoting a positive educational program. We invite all parents/guardians to become actively involved in any of the many PTA sponsored activities. As a volunteer, room mother, Board member, or officer, you can make a meaningful contribution. Get involved and be a part of the team!

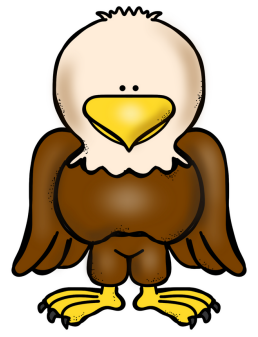
School Advisory Council

The School Advisory Council advises the principal on issues of school-wide concern and will be instrumental in the on-going process of the development, implementation, and evaluation of a School Improvement Plan. All meetings are open to the public. Notices of the meetings will be on the school calendar attached to the monthly newsletter, as well as on the school marquee.

Thank you in advance for supporting your child this school year. With your collaboration, these policies and procedures will ensure a safe, yet engaging, school year for everyone.

August Golden Eagles

Character Trait: Being Positive



KG

Brady

Bryan

Lemery

McMahon

Romfh

Real

Houde

Novalee Lewis

Kinzley Smith

Lucy Case

Maia Acevedo

Zechariah Peek

McKinley Weinar

Jalyn Cushion

1st

Chapov

Fischer

Heim

Hilliard

Osborne

Smith, Ke.

Wilkins

Zant

Bellamy Carpenter

Victoria Baucom

Sophia Miller

Eleanor (Ellie) Helsel

Maren Guyan

Savanah Harding

Lacey Sherouse

Avery Graham

2nd

Borombozin

Duncan

Fosser

Frank

Jimenez

Kastensmidt

Mari-Jayne Suisse

Riley Hymes

Stella Hall

Emily Demko

Isabella Andres

Liam Navarro

Multi-Level

Kirby

Reed

Young

Ryker Morrison

Jade Sweat

Malachi Beaulieu