

ESOL, Immigrant, & Migrant Education

WELCOME PACKET

CONTACTS

ESOL PROGRAM

sbac.edu/esol

Don Fitzpatrick

ESOL Coordinator (K-12) /
Secondary ELA Curriculum Specialist
fitzpatrickdk@gm.sbac.edu
Phone: (352) 955-6850 x1505

Kamil Leavitt

ESOL Family Liaison Specialist
(Non-center Schools)
leavittkl@gm.sbac.edu
Phone: (352) 955-7676, ext. 1673

Gloria Schwartz

ESOL Family Liaison Specialist
ESOL Center Schools
schwartzgv@gm.sbac.edu
Phone: (352) 955-6707, ext. 5492

MIGRANT EDUCATION PROGRAM

sbac.edu/migrant

Victoria Gomez de la Torre

Program Supervisor
gomezdelatorrev@gm.sbac.edu
(352) 955-6855 ext. 6361

Ruth Reyes

Social Services Coordinator/Advocate Support
reyesrf@gm.sbac.edu
(352)955-6855 ext. 6372
213-3358 (work cell)

MCKINNEY-VENTO PROGRAM

sbac.edu/homeless

Syltane "Fifi" Pierre
Homeless Liaison
pierresj@gm.sbac.edu
(352)955-7323
(352)275-8178 (work cell)

ENGLISH FOR SPEAKERS OF OTHER LANGUAGES (ESOL PROGRAM)

Alachua County's ESOL Program provides intensive English instruction to non-native English-speaking students. The program serves approximately 1000 students in grades K-12 within the Alachua County Public School system. Our student population is diverse, representing over 50 countries and speaking more than 35 languages. Eligibility for ESOL program services is determined based on the student's English language proficiency, which is evaluated through the process below:

- 1) All families enroll at their zoned school and complete a Home Language Survey.**
- 2) Students take a listening and speaking test.**
- 3) Students in grades 3-12 take a reading and writing test.**

Once the school determines that the student qualifies for ESOL services, the parents can decide between keeping their child at their zoned school or sending them to an ESOL Center School.

ESOL Center Schools in our district:

- **Carolyn Beatrice Parker Elementary School** (Kindergarten – 5th grade)
- **Westwood Middle School** (6th – 8th grade)
- **Gainesville High School** (9th – 12th grade)

At ESOL Center Schools, students have Reading and Language Arts classes with fellow ESOL students. Specially trained teachers and assistants support their English language learning, cultural integration, and individual needs. Other classes (Social Studies, Math, Science, etc.) include zoned students with the possibility of other ESOL students. Teachers will utilize ESOL strategies and accommodations to assist ESOL students.

Free school bus transportation is provided. ESOL students may also choose to remain at their zoned school, attending classes with zoned students and receiving support from teachers using ESOL strategies and accommodations. For more information, visit sbac.edu/esol or refer to page 1 for contacts.

ENROLLMENT

1. **Two current documents showing proof of residence in the mother's or the father's name:** rental contract or lease, utility bill, deed, sales agreement or property tax bill. **If you do not have any of these documents, please contact the McKinney Vento Program: 352-955-7323.*

2. **Proof of a Florida physical exam:** See page 14 for information on some resources for physical exams.

3. **Florida Certification of Immunization, Form 680:** See page 14 for more information on resources for immunizations.

4. **Proof of child's name and age:** Copy of a birth certificate or an 'acceptable substitute'. An acceptable substitute may be:

- a. Baptismal certificate showing date of birth, place of baptism **AND** a parent's sworn affidavit
- b. Insurance policy on child which has been in force **at least two years**
- c. Bible record of child's birth **AND** a parent's sworn affidavit
- d. Passport or certificate of arrival in the United States showing age of child
- e. School record from **at least four years prior**, showing the child's date of birth
- f. A parent's sworn affidavit accompanied by a certificate of examination

5. **School records:** Withdrawal forms, standardized test scores and recent report cards, educational testing, IEP or 504 Plans as applicable. If you don't have these items, you can provide the name of your child's previous school so the records can be requested.

6. **Online enrollment forms:** You can complete online enrollment forms at sbac.edu/enrollment or ask for assistance at school. You can also ask for paper forms at your school.

**If you need assistance with enrollment, please contact your child's school or refer to page 1 for contact information.*

STUDENT ASSIGNMENT (ZONING)

Students usually attend a school that is assigned based on where they live. If you do not know what school your child will attend, you can contact the Office of Student Assignment/Zoning at zoning@gm.sbac.edu or call (352) 955-7700 for more information.

ZONING EXCEPTIONS

If you want your child to attend a school that is not their zoned school, you may request a zoning exception. Zoning exceptions are granted based on specific criteria, typically some sort of hardship. **They must be renewed annually and can be revoked at any time due to student disciplinary issues or excessive absences/tardies.** Transportation to school is not provided for students on zoning exceptions.

MAGNET PROGRAMS

The district has special magnet programs that students can apply to based on their career and academic interests. For more information visit: sbac.edu/magnet

EXCEPTIONAL STUDENT EDUCATION (ESE)

For information on programs for students who are gifted, have a learning or physical disability, please contact your child's school. For general information on Exceptional Student Services (special education), please visit: sbac.edu/ese

TRANSPORTATION

Transportation is provided for students who live two or more miles from school. Parents may request transportation for students who live less than two miles from school if their route meets the ‘hazardous walking conditions’ as per state law.

It is recommended that students be at their assigned stop 5-10 minutes prior to the assigned pick-up time. Students must follow all rules on the bus. Students must ride in their assigned seats. They are not permitted to use cell phones on the school bus.

WHAT IF THE BUS IS RUNNING LATE?

If your bus is running more than 20 minutes behind schedule:

- 1) Check your phone and email for late bus alerts.**
- 2) Visit sbac.edu/transportation and click on “late buses” for a list of buses that are running behind schedule.**
- 3) Call 352-955-7602 for additional information.**



TRANSPORTATION DEPARTMENT

352-955-7602

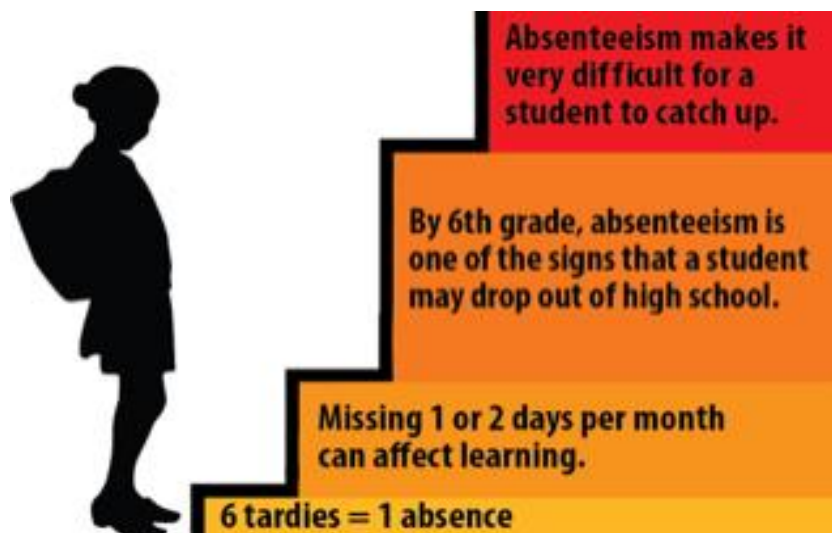
ATTENDANCE/TRUANCY

Regular attendance is **critical to academic success**. Frequent absences (*even if they are excused*) cause students to struggle academically. It can also be disruptive to the rest of the class since teachers often have to stop and help students to catch up.

It is a parent's responsibility to ensure that their child attends school regularly and arrives at school on time. Please try to make appointments after school hours. For morning appointments, you are able to bring your student to school afterwards so that they do not miss an entire day of instruction.

In case of absences and early checkouts:

- Your child is considered tardy if she/he is not in the classroom when the tardy bell rings. **Six unexcused tardies is considered equal to an absence.**
- Parents must send in a **written excuse as soon as possible** after an absence. Parents can write a parental note for up to SIX (6) absences per semester. Any other absences not excused with a doctor's note or other documentation will be considered unexcused.
- If you are checking out your child early for a doctor's appointment, please send a doctor's note for that appointment. Otherwise, the early checkout will be marked as unexcused.
- Students who are tardy, absent or leave school early are expected to make up any missed work when they return to class.



COMMUNICATING WITH YOUR CHILD'S SCHOOL

PARENTS MUST:

- Ensure that their children attend school regularly.
- Talk with their children about what they learn in school.
- Check their children's grades regularly.
- Contact teachers if they have any questions or concerns.

Parents are responsible for maintaining their contact information current and checking their emails/messages regularly.

HOW DO I CONTACT MY CHILD'S TEACHER?

1. **Email** - Teachers typically share their contact information with parents. Email information is also listed on your school's website.
2. **Child's folder** - If you have an elementary school student, teachers send important information inside your child's communication folder. You can also send notes for the teacher in the folder.
3. **Skyward Family Access** - This is the school district's official parent portal. Teachers send messages called *Skylerts* that you can view through Skyward Family Access. **Check Skyward often.**
4. **Other applications** - Some teachers use additional applications such as *Class Dojo* or *Remind*. They still post grades and other information in Skyward.
5. **Telephone** - You can call the school or stop by the front office at any time and leave a message for your child's teacher. Please be aware that teachers are in classrooms during instructional time and cannot stop class to meet with parents.

ASSISTANCE FOR PARENTS WHO NEED INTERPRETERS

Our school district has a service called *Language Line* with interpreters available immediately by telephone. You can ask for an interpreter at any time to assist you in communicating with your child's school. You can also request letters or documents to be sent to you in a language that you can understand.

SKYWARD FAMILY ACCESS

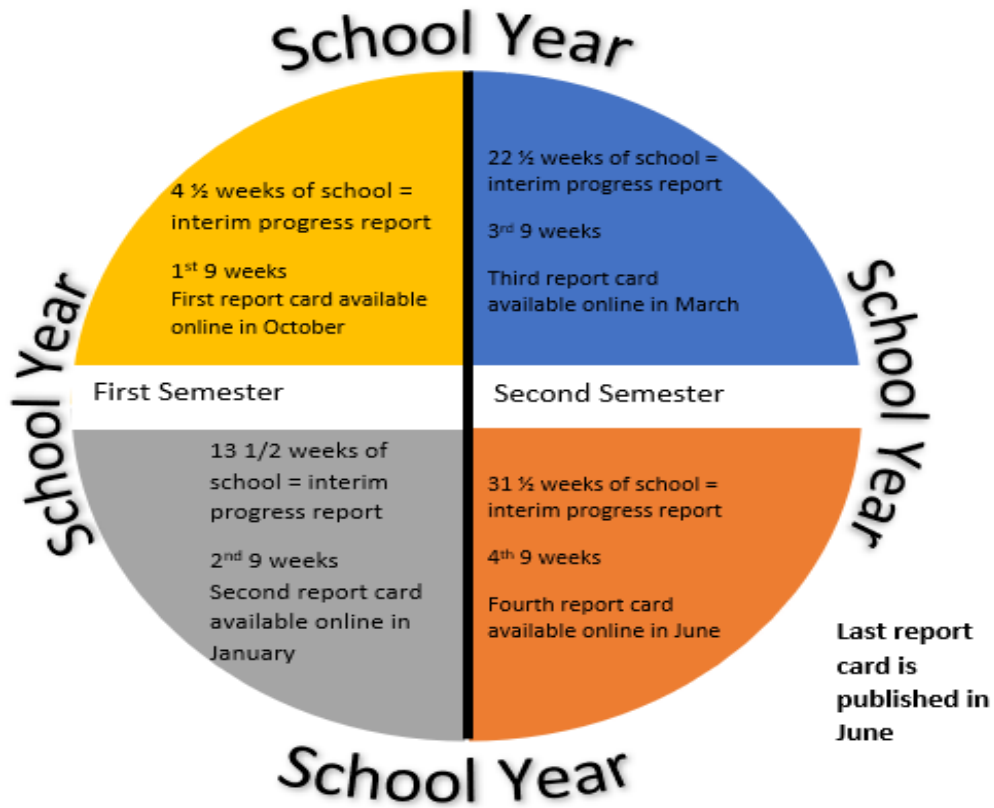
Information on students' academic progress is available through Skyward Family Access every day. Both students and parents can have access to Skyward at any time.

If you provided an email address to the school when you registered your child, you should already have Skyward access set up. If you cannot remember your login information, you can go to the Skyward login page and click on "forgot password". If you never provided the school with an email address, please go to your child's school to sign-up for Skyward.

Please scan this QR code to get access to the Skyward Family Access page!

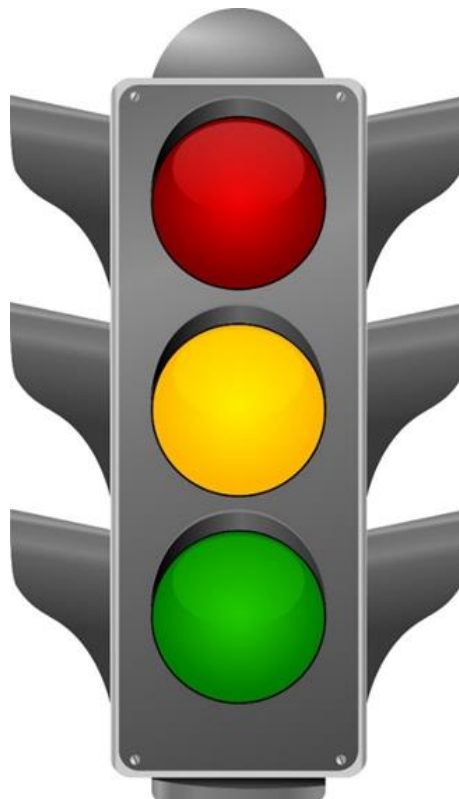


K-2 SCHOOL YEAR GRADING SCALE



Grades

U	Unsatisfactory Progress
N	Needs Improvement
S	Satisfactory
S+	Above Satisfactory
E	Excellent Progress

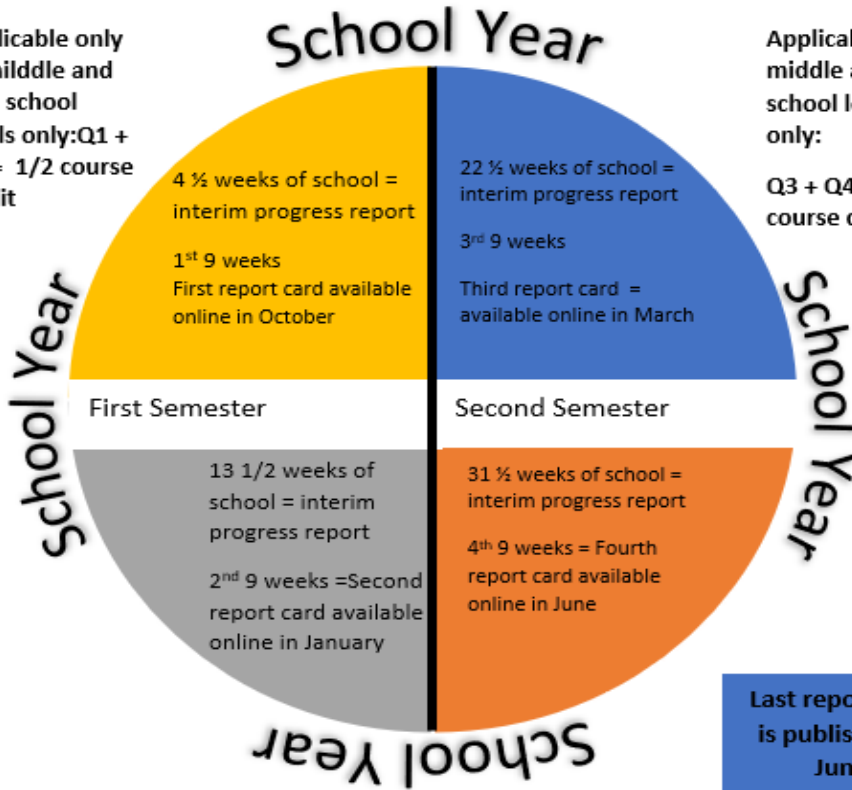


Scale

U	0% - 59% Did not pass the class
N	60% - 69%
S	70%-79%
S+	80%-89%
E	90% - 100%

3-12 YEAR GRADING SCALE

Applicable only to middle and high school levels only: Q1 + Q2 = 1/2 course credit

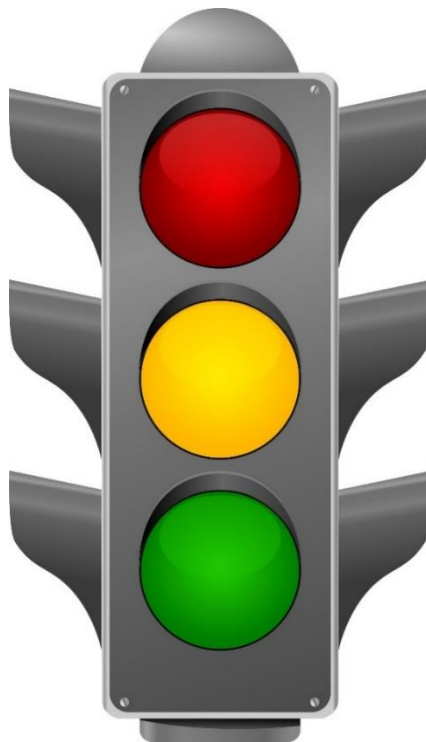


Applicable to middle and high school levels only:

Q3 + Q4 = 1/2 course credit

Grades

0 - 59	No Progress
60 - 66	Minimum Progress
67 - 69	Acceptable
70 - 76	Average Progress
77 - 79	Average Progress
80 - 86	Very good Progress
87 - 89	Very good Progress
90 - 100	Excellent Progress



Scale

F	0% - 59%	Did not pass the class
D	60% - 69%	Passed but very low GPA
D+	67% - 69%	Passed but very low GPA
C	70% - 76%	
C+	77% - 79%	
B	80% - 86%	
B+	87% - 89%	
A	90% - 100%	

ACADEMIC RESOURCES

MYPORTAL

MyPortal contains many learning resources for students. Every student has a username and password. If your child does not know his/her password, please contact their teacher (elementary) or school site tech (middle school and high school). Students use MyPortal at school and can log in at home also.

Some of the resources available through MyPortal include:

- **Textbooks (also contain additional resources such as glossaries in different languages)**
- **Digital Libraries**
- **Reading and math practice**



Parents can ask their child's teacher for suggestions as to which programs will be most beneficial for their students.

To log in go to: www.sbac.edu > Select [myPortal](#) and enter your student username and password

ADDITIONAL RESOURCES AT SCHOOL



SCHOOL MEALS

Each one of our schools offers a nutritious breakfast and lunch for all our students. (You must notify the school immediately if your child has a food allergy.) Some schools offer these options for free, others require that you fill out an application. Online applications and school menus can be found at www.yourchoicefresh.com



EXTENDED DAY ENRICHMENT PROGRAM (EDEP)

The school district offers its Extended Day Enrichment Program for students in grades K-8. EDEP is an optional after school care program that offers planned student activities, homework time and free time. Students can stay after school until 5:30pm (6:00pm for grades 6-8) on school days. EDEP is closed on holidays/teacher work days. Visit your school office or go to: www.sbac.edu/edep for more information.



EXTRACURRICULAR ACTIVITIES

Students benefit greatly from participating in extracurricular activities at school. Depending on the grades, these activities include: competitive sports, student clubs based on different interests, honor societies based on academic achievement, etc. Extracurricular activities vary at each school. Please visit your school's website for more information.



GUIDANCE COUNSELORS

They address academic, and emotional/social needs of students. They do not offer therapy, but can provide information on mental health and suicide prevention. Students can access their counselors at school. Parents can also contact their child's guidance counselor. For information on guidance counselor services, please visit: <https://f102219191.schoolwires.net/Page/445>



SCHOOL NURSES

School nurses provide professional and compassionate health care to students during their school day. Nurses can administer medication with parent's written permission. Please contact your school for more information. The district Health Services webpage also offers additional details: <https://f102219191.schoolwires.net/Page/1637>

COMMUNITY RESOURCES

The following organizations aid families in need. They are not affiliated with, or sponsored by, Alachua County Public Schools.

RESOURCE CONNECTIONS	
findhelp.org	Search engine to find free or reduced-cost resources like food, housing, financial assistance, health care, and more.
United Way https://www.unitedwayncfl.org/211-your-first-call-help211	Assists individuals in finding free or low-cost resources like food, housing, financial assistance, health care resources, etc.

FOOD PANTRIES/HOUSEHOLD ITEMS		
Organization	Address/Contact	Additional Information
SWAG Resource Center	807 SW 64th Terrace, Gainesville, FL 32607. 352-505-6823 swadvocacygroup.org/	Distributes breads/sweets/cakes every Wednesday starting at 9am while supplies last. Additional services/monthly food distribution listed on website.
Library Partnership Resource Center	912 NE 16th Avenue Gainesville, FL 32601. (352) 334-0160 pfsf.org/resourcecenters/librarypartnership/	Distributes food every other Friday by request, but non-applicants can line up at 4pm to pick up any leftover food. Additional services listed on website.
Salvation Army	639 East University Avenue, Gainesville, FL 32601. (352) 376-1743. gainesville.salvationarmyflorida.org	Distributes breads and pastries/sweets on Wednesdays from 9am-12pm or while supplies last.

FOOD PANTRIES/HOUSEHOLD ITEMS

Organization	Address/Contact	Additional Information
Farm Share	Locations vary. See website for dates/locations. www.farmshare.org/food-distributions-florida	Distributes food in Gainesville periodically. Check website for locations/times.
Oak Park Baptist Church	4610 SW Archer Road #2233, Gainesville, FL. (352) 372-2730. theoakschurchgainesville.com/ministries.html	Distributes food on the last Friday of every month. Check website for November and December.
Catholic Charities	1701 NE 9th Street, Gainesville, FL 32609. (352) 372-0294 catholiccharitiesgainesville.org/	Monday-Thursday - 9:30am - 12:30pm, Friday by appointment. Also has a mobile outreach program for rural areas.
Gainesville Community Ministry	238 SW 4th Avenue, Gainesville, FL 32601. (352) 372-8162 www.gcmhelp.org/home0.aspx	Food Pantry open Mon - Thurs 9:00am - 1:00pm
ESOL Closet	Gainesville High School 1900 NW 13 th Street Gainesville, FL 32609. (352)281-0836. Email: VOLyarivls@gm.sbac.edu	*BY APPOINTMENT ONLY Students must be enrolled in school and be part of the ESOL, Migrant Education programs in order to be eligible to receive items.

MEDICAL RESOURCES

Organization	Address/Contact	Additional Information
Palms Pediatrics in Gainesville	1014 NW 57th Street, Gainesville, FL 32601 (352) 376-8211 https://www.palmsmg.org/	Sliding scale
Equal Access Clinic	Locations and schedules vary. (352) 273-9425 equalaccess.med.ufl.edu/ primary-care-clinics/	Free. Does not offer immunizations, only medical exams.
UF Mobile Outreach Clinic	Locations vary. (352) 273-5329 https://outreach.med.ufl.edu/pati ents/weekly-schedule/	Free. Does not offer immunizations, only medical exams.
Rahma Mercy Clinic	5220 SW 13th Street, Gainesville, FL, 32608 (352) 443-5439 https://www.rahmamercy clinic.com/ Saturdays from 9am-1pm	Free. Does not offer immunizations only regular medical exams.
Alachua County Health Department	224 SE 24 th Street Gainesville, FL 32641 (352) 334-7900 alachua.floridahealth.gov/	Offers immunizations free (\$10 for record transfer) and \$35 for a school physical. For other services, see website.

LOW COST DENTAL CLINICS

Organization	Address/Contact	Additional Information
Saving Smiles at UF Dentistry -free	Locations varies: https://dental.ufl.edu/departments/communitydentistryandbehavioralscience/community-outreach/saving-smiles-program/	Free.
Gainesville Community Ministries	238 SW 4th Avenue, Gainesville 32601. (352) 548-4806	They have eligibility requirements.
ACORN Clinic	N. State Road 235, Brooker 32622. 352-375-3790	Reduced cost.
Aza Health Center	410 NE Waldo Road, Gainesville 32641	Low cost based on household income.
UF College of Dentistry (Oral Surgery Clinic)	1395 Center Drive, D1 108, Gainesville, FL 32610. (352) 273-6705. https://dental.ufl.edu/departments/oral-maxillofacial-surgery/student-oral-surgery-clinic/	Low cost. Emergency dental clinic for adults and children ages 13-17 accompanied by a parent or legal guardian. Visit website or call for details.
UF College of Dentistry (Pediatric Dentistry)	1395 Center Drive in D1-40 Gainesville, Florida 32610 (352) 273-7643 ufhealth.org/locations/uf-health-pediatric-dentistry#reduced-fee-dental-care-7643	Please call or see website for details.
Freedom Clinic	352-421-5510 https://freedomclinicusa.org/	Serves Marion County, but occasionally host events in Alachua County (Check website for events)

FREE TUTORING RESOURCES

Organization	Address/Contact	Additional Information
Alachua County Public Library District	See website for various locations and phone numbers. www.aclib.us	Free online tutoring; can be done from home if the student has a public library card. In person homework help at Alachua Branch during school year.
Children Beyond Our Borders	www.chbob.org/	Free tutoring with an education-trained tutor that will tutor, mentor, and provide guidance.
Learn to be	www.learntobe.org/enroll	Non-profit organization supporting underserved youth. Please visit their webpage for more information. Tutoring is remote.
SWAG Resource Center	807 SW 64th Terrace, Gainesville, FL 32607. 352-505-6823. swadvocacygroup.org/	In-person tutoring program with limited spaces. There are eligibility requirements, please contact the center for more information. Calendar lists other services available, including food and clothing distribution
Library Partnership	912 NE 16th Avenue Gainesville, FL 32601. 352-334-0160. pfsf.org/resourcecenters/librarypartnership/	In-person homework help program with limited spaces. There are eligibility requirements, please contact the center for more information

ADULT EDUCATION

HIGH SCHOOL DIPLOMA AND GED

Individuals 18 and older who have not graduated from high school can obtain a high school diploma through charter school, adult high school or obtain a Graduation Equivalency Diploma (GED). The following locations offer high school and/or GED Programs.

Organization	Address/Contact	Additional Information
Alachua County Public Schools	620 East University Avenue, Gainesville, FL 32601. (352) 955-7035 sbac.edu/adulted	Offers Adult High School and GED classes
Santa Fe College	3000 NW 83rd Street Building C, Room 101 Gainesville, FL 32606. 352-395-5968 adulthoodeducation@sfcollege.edu https://www.sfcollege.edu/prepare/adult-education/abe-ged/	Offers Adult Basic Education and GED Programs
SiaTech MycroSchool	7022 NW 10th Place, Gainesville, FL 32605. (352) 333-7952. siatechmycroschool.org/	Free charter school where students can obtain a high school diploma. Students have until age 24 to obtain their diploma.

ENGLISH CLASSES FOR ADULTS

Organization	Address/Contact	Additional Information
Alachua County Library District	Locations vary. See website for details. Headquarters Branch: (352) 334- 3940 aclib.us For Adult education information: aclib.us/literacy	Classes are offered at different locations and are free. The website contains a list of other organizations who offer English classes for Adults.
Children Beyond Our Borders	PO Box 6228 Gainesville FL, 32627-6228 www.chbob.org/ (website has contact form)	Offers English classes for adults

EARLY CHILDHOOD EDUCATION

Preschool education is not mandatory in the State of Florida. However, there are a variety of programs that younger children can participate in.

VOLUNTARY PRE-KINDERGARTEN

Pre-Kindergarten Program (VPK) is a no-cost educational program provided by the state for children that live in Florida and are 4 years old by September 1st. of that school year. For information on the Alachua County Public Schools VPK program, you can apply at: www.tinyurl.com/ACPS-VPK

For additional information, contact:

Trisha Nieves

VPK Administrative Coordinator

Email: nievestr@gm.sbac.edu

352.955.7676 ext. 6315

Jerri Richardson

VPK Program Services Coordinator

Email: richardsonjl@gm.sbac.edu

352.955.7676 ext. 6311

For additional VPK programs not associated with the school district, you can contact the Early Learning Coalition of Alachua County at: (352) 375-4110 or visit their website at: [/elcalachua.org/](http://elcalachua.org/)

EXCEPTIONAL STUDENT EDUCATION – PRE-KINDERGARTEN (PRE-K ESE)

Pre-K ESE provides services for pre-school age children who may have difficulties with development. If you are concerned that your child has difficulties learning, speaking, playing, seeing, walking or hearing, you can self-refer through FLDRS or contact the Pre-K ESE office for more information.

Contacts:

Florida Diagnostic & Learning Resources System (FDLRS) - (800) 533-0326 or (352) 671-6051. (<https://springs.fdlrs.org>)

Alachua County Public Schools

Pre-K ESE Office

Feranside Family Services Center

3600 NE 15th Street, Gainesville, Fl 32609

(352)955-7671

www.sbac.edu/Page/30792