

**Alachua Learning Academy
Elementary School**

An elementary school program of
Alachua Learning Center, Inc.

A Component Unit of the Alachua County District School Board

Financial Statements
And
Independent Auditors' Report

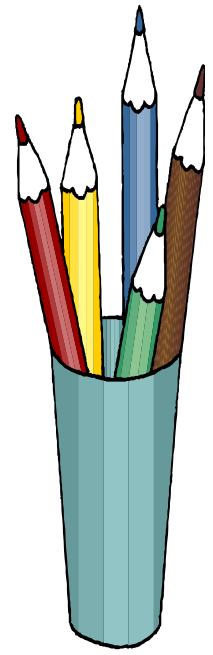
June 30, 2016

KATTELL AND COMPANY, P.L.

A professional accounting firm serving the nonprofit community.

**808-B NW 16th Avenue
Gainesville, Florida 32601**

(352) 395-6565



Financial Statements and Independent Auditors' Reports
June 30, 2016
Alachua Learning Academy Elementary School
A Component Unit of the Alachua County District School Board

Contents

INDEPENDENT AUDITORS' REPORT	1
REQUIRED SUPPLEMENTARY INFORMATION:	
Management's Discussion and Analysis (MD&A)	2
SPECIAL PURPOSE FINANCIAL STATEMENTS:	
Government-wide Financial Statements:	
Statement of Net Position.....	5
Statement of Activities.....	6
Governmental Fund Financial Statements:	
Balance Sheet.....	7
Reconciliation of the Balance Sheet to the Statement of Net Position	8
Statement of Revenues, Expenditures and Changes in Fund Balances.....	9
Reconciliation of the Statement of Revenues, Expenditures and Changes in Fund Balances to the Statement of Activities	10
Notes to the Financial Statements.....	11
REQUIRED SUPPLEMENTARY INFORMATION:	
Budgetary Comparison Schedule – General Fund.....	16
Budgetary Comparison Schedule – Special Revenue Fund.....	17
ADDITIONAL ELEMENTS:	
Communication with Those Charged with Governance	18
Management Letter	19
Independent Auditors' Report on Internal Control Over Financial Reporting and on Compliance and Other Matters	20
Schedule of Findings.....	21
School's Response	22

Kattell and Company, P.L.

Certified Public Accountants Serving the Nonprofit Community

808-B NW 16th Avenue Gainesville, Florida 32601 TEL: 352-395-6565 FAX: 352-395-6636 www.kattell.com

INDEPENDENT AUDITORS' REPORT

To the Board of Directors
Alachua Learning Center, Inc.

October 13, 2016

Report on Financial Statements

We have audited the accompanying financial statements of the governmental activities and each major fund of the Alachua Learning Academy Elementary School (the School), a component unit of the Alachua County District School Board, as of and for the year ended June 30, 2016, and the related notes to the financial statements, which collectively comprise the School's basic financial statements as listed in the table of contents.

Management's Responsibility for the Financial Statements. Management is responsible for the preparation and fair presentation of these financial statements in accordance with the accounting principles generally accepted in the United States of America; this includes the design, implementation, and maintenance of internal control relevant to the preparation and fair presentation of financial statements that are free from material misstatement, whether due to fraud or error.

Auditors' Responsibility. Our responsibility is to express opinions on these financial statements based on our audit. We conducted our audit in accordance with auditing standards generally accepted in the United States of America and the standards applicable to financial audits contained in *Government Auditing Standards*, issued by the Comptroller General of the United States. Those standards required that we plan and perform the audit to obtain reasonable assurance about whether the financial statements are free from material misstatement.

An audit involves performing procedures to obtain audit evidence about the amounts and disclosures in the financial statements. The procedures selected depend on the auditor's judgment, including the assessment of the risks of material misstatement of the financial statements, whether due to fraud or error. In making those risk assessments, the auditor considers internal control relevant to the entity's preparation and fair presentation of the financial statements in order to design audit procedures that are appropriate in the circumstances, but not for the purpose of expressing an opinion on the effectiveness of the entity's internal control. Accordingly, we express no such opinion. An audit also includes evaluating the appropriateness of accounting policies used and the reasonableness of significant accounting estimates made by management, as well as evaluating the overall presentation of the financial statements.

We believe that the audit evidence we have obtained is sufficient and appropriate to provide a basis for our audit opinions.

Special Purpose Financial Statements. The School is a program of Alachua Learning Center, Inc. As discussed in Note 1 to the financial statements, these special purpose financial statements are those of the School only and are not intended to be a complete presentation of the governmental activities and each major fund of Alachua Learning Center, Inc.

Opinions. In our opinion, the financial statements referred to above present fairly, in all material respects, the respective financial position of the governmental activities and each major fund of the School as of June 30, 2016, and the respective changes in financial position thereof for the year then ended in accordance with accounting principles generally accepted in the United States of America.

Other Matters - Required Supplementary Information. Accounting principles generally accepted in the United States of America require that management's discussion and analysis and the budgetary comparison schedules, as listed in the table of contents, be presented to supplement the basic financial statements. Such information, although not a part of the basic financial statements, is required by the Governmental Accounting Standards Board who considers it to be an essential part of financial reporting for placing the basic financial statements in an appropriate operational, economic, or historical context. We have applied certain limited procedures to the required supplementary information in accordance with auditing standards generally accepted in the United States of America, which consisted of inquiries of management about the methods of preparing the information and comparing the information for consistency with management's responses to our inquiries, the basic financial statements, and other knowledge we obtained during our audit of the basic financial statements. We do not express an opinion or provide any assurance on the information because the limited procedures do not provide us with sufficient evidence to express an opinion or provide any assurance.

Other Reporting Required by *Government Auditing Standards*

In accordance with *Government Auditing Standards*, we have also issued our report dated October 13, 2016, on our consideration of the School's internal control over financial reporting (internal control) and on our tests of its compliance with certain provisions of laws, regulations, contracts, and grant agreements and other matters. The purpose of that report is to describe the scope of our testing of internal control and compliance and the results of that testing, and not to provide an opinion on internal control or on compliance. That report is an integral part of an audit performed in accordance with *Government Auditing Standards* in considering the School's internal control and compliance.

Kattell and Company, P.L.

Gainesville, Florida

Management's Discussion and Analysis
June 30, 2016
Alachua Learning Academy Elementary School
A Component Unit of the Alachua County District School Board

This discussion and analysis of the School's financial performance provides an overview of the School's financial activities for the fiscal year ended June 30, 2016. Please read it in conjunction with the School's financial statements, which follow this section.

The following are various financial highlights for fiscal year 2016:

- The School's overall Net Position increased by approximately \$149,000, which is a 128% increase.
- Total ending unrestricted Net Position was \$265,714.
- The School had total expenses for the year of approximately \$644,000 compared to revenues of approximately \$793,000.
- The School educated 111 and 109 students in the years ending June 30, 2016 and 2015, respectively, serving grades K-5.

OVERVIEW OF THE SPECIAL PURPOSE FINANCIAL STATEMENTS

This annual report contains government-wide financial statements that report on the School's activities as a whole and fund financial statements that report on the School's individual funds.

Government-wide Financial Statements

The first financial statement is the Statement of Net Position. This statement includes all of the School's assets and liabilities using the accrual basis of accounting. Accrual accounting is similar to the accounting used by most private-sector companies. All of the current year revenues and expenses are recorded, regardless of when cash is received or paid. Net Position – the difference between assets and liabilities – can be used to measure the School's financial position.

The second financial statement is the Statement of Activities. This statement is also shown using the accrual basis of accounting. It shows the increases and decreases in net position during the fiscal year. Over time, the increases or decreases in net position are useful indicators of whether the School's financial health is improving or deteriorating. However, other non-financial factors, such as enrollment levels or changes in state funding, must also be considered when assessing the overall health of the School.

In these statements, all of the School's activities are considered to be governmental activities. The School has no business-type activities, which are generally financed in whole or in part by fees charged to external parties for goods or services.

Fund Financial Statements

Following the government-wide financial statements are the fund financial statements. They provide more detailed information about the School's funds.

The School maintains three individual governmental funds, the General Fund, Special Revenue Fund and Capital Projects Fund. All three are considered to be major funds and, accordingly, they are separately displayed.

Governmental funds are accounted for using modified accrual accounting. Modified accrual accounting focuses on available cash and other financial assets that can readily be converted to cash. This provides a shorter-term view of the fund's financial position. A reconciliation is provided with these statements, which helps to explain the differences between the fund financial statements and the government-wide financial statements.

Management's Discussion and Analysis
June 30, 2016
Alachua Learning Academy Elementary School, Inc.
A Component Unit of the Alachua County District School Board

CONDENSED FINANCIAL INFORMATION

The following table presents condensed, government-wide current year data about net position and changes in net position.

	2016 Governmental Activities	2015 Governmental Activities
Net Position		
Assets:		
Non-capital Assets	\$ 322,714	\$ 192,024
Total Assets	<u>322,714</u>	<u>192,024</u>
Liabilities:		
Current Liabilities	57,000	75,270
Total Liabilities	<u>57,000</u>	<u>75,270</u>
Net Position:		
Unrestricted	265,714	116,754
Total Net Position	<u>\$ 265,714</u>	<u>\$ 116,754</u>
Change in Net Position		
Program Revenues:		
Capital Grants & Contributions	\$ 27,858	\$ 36,137
General Revenues:		
Title I Grant	37,635	39,405
Florida Education Finance Program	713,516	697,389
Other State Revenues	14,174	2,193
Unrestricted Gifts and Contributions	--	260
Unrestricted Investment Earnings	122	51
Total Revenues	<u>793,305</u>	<u>775,435</u>
Program Expenses:		
Instruction	340,622	366,274
Instructional Support Services	--	13,594
General Support	285,573	314,494
Community Service	18,150	9,500
Total Expenses	<u>644,345</u>	<u>703,862</u>
Change in Net Position	148,960	71,573
Beginning Net Position	116,754	45,181
Ending Net Position	<u>\$ 265,714</u>	<u>\$ 116,754</u>

Management's Discussion and Analysis
June 30, 2016
Alachua Learning Academy Elementary School
A Component Unit of the Alachua County District School Board

OVERALL FINANCIAL POSITION AND RESULTS OF OPERATIONS

Governmental Activities. The governmental activities generated \$27,858 in program revenues and \$765,447 of general revenues, and incurred \$644,345 of program expenses. This resulted in a \$148,960 increase in Net Position.

THE SCHOOL'S INDIVIDUAL FUNDS

General Fund. The fund balance of the General Fund increased by \$148,960, from \$116,754 to \$265,714.

Special Revenue Fund. The fund balance of the Special Revenue Fund remained the same at \$0. This is expected due to the nature of Title I funding.

Capital Projects Fund. The fund balance of the Capital Projects Fund remained the same at \$0. Eligible expenditures exceeded capital outlay funding for the year.

BUDGETARY HIGHLIGHTS

General Fund. There were no significant differences between original and final budgets. There were no differences between the final budget and actual amounts.

CAPITAL ASSETS AND DEBT ADMINISTRATION

The School and the Alachua Learning Academy Middle School are programs operated by Alachua Learning Center, Inc. (the Corporation). The Corporation has elected to report all capital assets and all long term debt in the special purpose financial statements of the Middle School. As such, there will be no capital asset and debt administration activities reported in these special purpose financial statements.

ECONOMIC FACTORS

The School currently is not aware of any conditions that are expected to have a significant effect on the School's financial position or results of operations.

CONTACTING THE SCHOOL'S FINANCIAL MANAGEMENT

This financial report is designed to provide a general overview of the School's finances and to show the School's accountability for the money it receives. If you have any questions about this report or need additional financial information, contact Krishna Rivera, Director; PO Box 1389, Alachua, Florida 32616.

Statement of Net Position
June 30, 2016
Alachua Learning Academy Elementary School
A Component Unit of the Alachua County District School Board

	Governmental Activities
Assets	
Cash	\$ 320,447
Grants Receivable	<u>2,267</u>
Total Assets	<u>322,714</u>
Liabilities	
Due to Middle School	<u>57,000</u>
Total Liabilities	<u>57,000</u>
Net Position	
Unrestricted	<u>265,714</u>
Total Net Position	<u><u>\$ 265,714</u></u>

See accompanying notes.

Statement of Activities
For the Year Ended June 30, 2016
Alachua Learning Academy Elementary School
A Component Unit of the Alachua County District School Board

	Program Revenues			Net (Expense) Revenue and Change in Net Assets
	Expenses	Charges for Services	Operating Grants and Contributions	
Functions/Programs:				
Governmental Activities:				
Instruction	\$ (340,622)	\$ --	\$ --	\$ (340,622)
General Support	(285,573)	--	--	(257,715)
Community Service	(18,150)	--	--	(18,150)
Total	<u>\$ (644,345)</u>	<u>\$ --</u>	<u>\$ --</u>	<u>(616,487)</u>

General Revenues:

Federal Through State:	
Title I Grant	37,635
State Revenue:	
Florida Education Finance Program	713,516
Other State Revenues	14,174
Unrestricted Investment Earnings	<u>122</u>
Total General Revenues	<u>765,447</u>
Change in Net Position	148,960
Net Position – Beginning of Year	<u>116,754</u>
Net Position – End of Year	<u>\$ 265,714</u>

See accompanying notes.

Balance Sheet – Governmental Funds
June 30, 2016
Alachua Learning Academy Elementary School
A Component Unit of the Alachua County District School Board

	General Fund	Special Revenue Fund	Capital Projects Fund	Total Governmental Funds
Assets				
Cash	\$ 320,447	\$ --	\$ --	\$ 320,447
Grants Receivable	2,267	--	--	2,267
Total Assets	\$ 322,714	\$ --	\$ --	\$ 322,714
Liabilities and Fund Balances				
Liabilities:				
Due to Middle School	\$ 57,000	\$ --	\$ --	\$ 57,000
Total Liabilities	57,000	--	--	57,000
Fund Balances:				
Unassigned	265,714	--	--	265,714
Total Fund Balances	265,714	--	--	265,714
Total Liabilities and Fund Balances	\$ 322,714	\$ --	\$ --	\$ 322,714

See accompanying notes.

**Reconciliation of the Balance Sheet to the Statement of Net Position –
Governmental Funds**

June 30, 2016

Alachua Learning Academy Elementary School
A Component Unit of the Alachua County District School Board

Fund Balances – Total Governmental Funds	\$ 265,714
---	------------

Amounts reported for Governmental activities in the Statement of Net Position are different because:

Capital assets used in governmental activities are not reported in the governmental funds:

Capital Assets – Net of Accumulated Depreciation	--
--	----

Net Position of Governmental Activities	<u><u>\$ 265,714</u></u>
--	--------------------------

See accompanying notes.

**Statement of Revenues, Expenditures and Changes in Fund Balances -
Governmental Funds**

For the Year Ended June 30, 2016

Alachua Learning Academy Elementary School

A Component Unit of the Alachua County District School Board

	<u>General Fund</u>	<u>Special Revenue Fund</u>	<u>Capital Projects Fund</u>	<u>Total Governmental Funds</u>
Revenues				
Federal through State:				
Title I Grant	\$ --	\$ 37,635	\$ --	\$ 37,635
State Revenue:				
Florida Education Finance Program	713,516	--	--	713,516
State Recognition Program	10,580	--	--	10,580
Public Education Capital Outlay	--	--	27,858	27,858
Other State Revenue	2,340	1,254	--	3,594
Local Revenue:				
Unrestricted Investment Earnings	122	--	--	122
Total Revenues	726,558	38,889	27,858	793,305
Expenditures and Changes in Fund Balances				
Expenditures:				
Current:				
Instruction	301,733	38,889	--	340,622
General Support	257,715	--	--	257,715
Community Service	18,150	--	--	18,150
Capital Outlay	--	--	27,858	27,858
Total Expenditures	577,598	38,889	27,858	644,345
Excess of Revenues Over/(Under) Expenditures	148,960	--	--	148,960
Fund Balances, July 1, 2015	116,754	--	--	116,754
Fund Balances, June 30, 2016	\$ 265,714	\$ --	\$ --	\$ 265,714

See accompanying notes.

**Reconciliation of the Statement of Revenues, Expenditures and Changes in
Fund Balances to the Statement of Activities - Governmental Funds**
For the Year Ended June 30, 2016
Alachua Learning Academy Elementary School
A Component Unit of the Alachua County District School Board

Excess of Revenues over Expenditures – Total Governmental Funds \$ 148,960

Amounts reported for governmental activities in the Statement of Activities are different because:

Governmental funds report capital outlays as expenditures. However, in the Statement of Activities, the cost of those assets is depreciated over their estimated useful lives.

Current Year Expenditures for Capital Assets: --

Change in Net Position of Governmental Activities \$ 148,960

See accompanying notes.

Notes to the Financial Statements

June 30, 2016

Achua Learning Academy Elementary School

A Component Unit of the Achua County District School Board

NOTE 1 – REPORTING ENTITY

Achua Learning Center, Inc. (the Corporation) is a not-for-profit corporation organized pursuant to Chapter 617, Florida Statutes, the Florida Not For Profit Corporation Act, and Section 1002.33, Florida Statutes. The Corporation operates an elementary school under the name “Achua Learning Academy Elementary School” and a middle school under the name “Achua Learning Academy Middle School” (Middle School). These special purpose financial statements are those of the Achua Learning Academy Elementary School (the School) only. The governing body of the School is the Corporation’s Board of Directors. The School is a program of the Corporation; the Corporation is considered a component unit of the Achua County District School Board (the District).

The general operating authority of the School is contained in Section 1002.33, Florida Statutes. The School operates under a charter of the District, the sponsoring entity. The current charter is effective until June 30, 2031, and may be renewed provided that a program review demonstrates that certain criteria addressed in Section 1002.33(7), Florida Statutes, have been successfully accomplished. At the end of the term of the charter, the District may choose not to renew the charter under grounds specified in the charter, in which case the District is required to notify the School in writing at least 90 days prior to the charter’s expiration. Pursuant to Section 1002.33(8)(e), Florida Statutes, the charter school contract provides that in the event the School is dissolved or terminated, any unencumbered funds and all School property purchased with public funds automatically revert to the District. During the term of the charter, the District may also terminate the charter if good cause is shown.

Criteria for determining if other entities are potential component units of the School which should be reported with the School’s basic financial statements are identified and described in the Governmental Accounting Standards Board’s (GASB) *Codification of Governmental Accounting and Financial Reporting Standards*, Sections 2100 and 2600. The application of these criteria provide for identification of any entities for which the School is financially accountable and other organizations for which the nature and significance of their relationship with the School are such that exclusion would cause the School’s basic financial statements to be misleading or incomplete. Based on these criteria, no component units are included within the reporting entity of the School.

NOTE 2 – SUMMARY OF SIGNIFICANT ACCOUNTING POLICIES

The accounting policies of the School conform to generally accepted accounting principles as applicable to governments. The more significant accounting policies are described below to enhance the usefulness of the financial statements to the reader.

Government-wide Financial Statements

The government-wide financial statements (the Statement of Net Position and the Statement of Activities) report information on all of the activities of the School. Governmental activities are reported separately from business-type activities, which rely on fees charged to external parties as their primary revenues. The School has no business-type activities.

Any internal inter-fund activity has been eliminated from the government-wide financial statements.

Notes to the Financial Statements
June 30, 2016
Achua Learning Academy Elementary School
A Component Unit of the Achua County District School Board

NOTE 2 – SUMMARY OF SIGNIFICANT ACCOUNTING POLICIES (continued)

Government-wide Financial Statements (concluded)

The Statement of Net Position reports the School's financial position as of the end of the fiscal year. In this statement, the School's net position is reported in three categories: net investment in capital assets; restricted net position; and unrestricted net position.

The Statement of Activities is displayed using a net-cost format and reports the degree to which the direct expenses of a given function are offset by program revenues. Direct expenses are those that are clearly identifiable with a specific function. Program revenues include 1) charges for services that are directly related to a given function and 2) grants and contributions that are restricted to meeting the operational or capital requirements of a particular function. Other items not properly included among program revenues are reported instead as general revenues.

Fund Financial Statements

The financial transactions of the School are reported in individual funds in the fund financial statements. The governmental fund statements include reconciliations with brief explanations to better identify the relationship between the government-wide statements and the statements for the governmental funds.

The following funds are used by the School:

GOVERNMENTAL FUNDS

General Fund – The General Fund is the general operating fund of the School. It is used to account for all financial resources, except those associated with grants that are restricted to specified uses.

Special Revenue Fund – The Special Revenue Fund is used to account for financial resources associated with grants that are restricted to operational uses.

Capital Projects Fund – The Capital Projects Fund is used to account for financial resources associated with grants that are restricted to capital uses.

In the accompanying fund financial statements, the General Fund, Special Revenue Fund and Capital Projects Fund are all considered to be major funds and, therefore, are separately displayed. The School has no non-major funds.

Measurement Focus and Basis of Accounting

The government-wide financial statements are reported using the economic resources measurement focus and the accrual basis of accounting. Revenues are recorded when earned and expenses are recorded when a liability is incurred, regardless of the timing of related cash flows.

Governmental fund financial statements are reported using the current financial resources measurement focus and the modified accrual basis of accounting. Revenues are recognized as soon as they are both measurable and available. Revenues are considered to be available when they are collectible within the current period or soon enough thereafter to pay liabilities of the current period. For this purpose, the School considers revenues to be available if they are collected within 60 days of the end of the current fiscal period. Expenditures generally are recorded when the related fund liability is incurred. However, debt service expenditures, if any, are recorded only when payment is due.

Notes to the Financial Statements
June 30, 2016
Achua Learning Academy Elementary School
A Component Unit of the Achua County District School Board

NOTE 2 – SUMMARY OF SIGNIFICANT ACCOUNTING POLICIES (continued)

Measurement Focus and Basis of Accounting (concluded)

Most revenues are considered to be susceptible to accrual and have been measured in the current fiscal period. Certain other items are considered to be measurable and available only when cash is received.

Cash

Cash consists of deposits in financial institutions. At times, such deposits may be in excess of the Federal Deposit Insurance Corporation (FDIC) insurance limit. At June 30, 2016, there were no amounts exceeding FDIC insurance coverage. The School has no policy regarding deposit custodial credit risk.

Capital Assets and Depreciation

The School is a program of the Corporation. The School contributes to the purchase of capital assets, but the Corporation has elected to report all capital assets in the special purpose financial statements of the Middle School. As such, the School does not report capital assets in these special purpose financial statements.

Revenue Sources

Revenues for current operations are received primarily from the District pursuant to the funding provisions included in the School's charter. In accordance with the funding provisions of the charter and Florida Statutes, the School reports the number of full-time equivalent (FTE) students and related data to the District. Under the provisions of Florida Statutes the District reports the number of FTE students and related data to the Florida Department of Education (FDOE) for funding through the Florida Education Finance Program. Funding for the School is adjusted during the year to reflect the revised calculations by the FDOE under the Florida Educational Finance Program and the actual weighted FTE students reported by the School during the designated FTE student survey periods. The School also receives other financial assistance. This assistance is generally based on applications submitted to and approved by the granting agency.

Compensated Absences

The School's employees had no unused sick and vacation time at the end of the school year. Therefore, no liability for compensated absences is recorded.

Long-term Liabilities

The School is a program of the Corporation. The School contributes to the payment of debt service, but the Corporation has elected to report long term liabilities in the special purpose financial statements of the Middle School. As such, the School does not report long term liabilities in these special purpose financial statements.

Notes to the Financial Statements
June 30, 2016
Alachua Learning Academy Elementary School
A Component Unit of the Alachua County District School Board

NOTE 2 – SUMMARY OF SIGNIFICANT ACCOUNTING POLICIES (concluded)

Net Position

Net position represents the difference between assets and liabilities and is reported, as applicable, in three categories as hereafter described. *Net investment in capital assets* represents capital assets net of accumulated depreciation and any outstanding debt related to those assets. Net position is reported as *restricted* when there are legal limitations imposed on their use by legislation, or external restrictions imposed by other governments, creditors, or grantors. The balance of the net position is reported as *unrestricted*.

When both restricted and unrestricted resources are available for use, it is the School's policy to use restricted resources first, and then unrestricted resources as they are needed.

Fund Balance Classifications

Governmental funds report separate classifications of fund balance.

Non-Spendable. The non-spendable fund balance classification includes amounts that cannot be spent because they are either (a) not in spendable form or (b) legally or contractually required to be maintained intact.

Restricted. The restricted fund balance is defined as having restrictions (a) externally imposed by creditors (such as through debt covenants), grantors, contributors, or laws or regulations of other governments, or (b) imposed by law through constitutional provisions or enabling legislation.

Committed. Committed fund balance is defined as amounts that can only be used for specific purposes pursuant to constraints imposed by formal action of the School's Board of Directors.

Assigned. Assigned fund balance is defined as amounts that are constrained by the intent of the School's Board of Directors to be used for specific purposes, but are neither restricted nor committed. The School has given the authority to assign fund balance to the School's Director. Assigned fund balance includes spendable fund balance amounts established by the Director that are intended to be used for specific purposes that are neither considered restricted nor committed. Assignment of fund balance may be (a) made for a specific purpose that is narrower than the general purposes of the government itself; and/or (b) used to reflect the appropriation of a portion of existing unassigned fund balance to eliminate a projected deficit in the subsequent year's budget in an amount no greater than the projected excess of expected expenditures over expected revenues. Assigned fund balance shall reflect management's intended use of resources as set forth each year by the Director. Assigned fund balance may or may not be appropriated for expenditure in the subsequent year depending on the timing of the project/reserve for which it was assigned.

Unassigned. Unassigned fund balance is the residual classification for the general fund.

It is the policy of the School to use restricted resources to the extent they are available, then committed resources, followed by assigned resources. Once these are consumed the School will then use unassigned resources. The School does not have a formal policy requiring a minimum fund balance.

Use of Estimates

The preparation of financial statements in conformity with generally accepted accounting principles requires management to make various estimates. Actual results could differ from those estimates.

Notes to the Financial Statements

June 30, 2016

Alachua Learning Academy Elementary School

A Component Unit of the Alachua County District School Board

NOTE 3 – OPERATING LEASES

The School pays a facilities fee to the Middle School for the School's share of facilities costs. The Corporation has elected to report all operating leases in the special purpose financial statements of the Middle School. The Corporation has a lease for land for the School's premises which calls for payment in the amount of \$100 per student per October FTE count with a 2% increase each year. The lease began on November 1, 2007, and has a term of 10 years with an automatic renewal of five years. The minimum annual lease amount is \$10,000 per year for the next five years totaling \$50,000. Total paid for the fiscal year ending June 30, 2016, was \$17,160.

NOTE 4 – RISK MANAGEMENT

The School is exposed to various risks of loss, including general liability, personal injury, workers compensation, and errors and omissions. To manage its risks, the Corporation has purchased commercial insurance which covers both the Elementary School and the Middle School. Settled claims resulting from these risks have not exceeded commercial coverage in any of the past three years.

NOTE 5 – RETIREMENT

The Corporation has elected to report the costs of all retirement benefits in the special purpose financial statements of the Middle School. The School pays a personnel fee to Middle School for the School's share of all personnel costs, including retirement. Retirement costs paid by the Corporation are disclosed in the financial statements of the Middle School.

The Corporation made contributions on behalf of its employees to a 457(b) Deferred Compensation Plan managed by Mass Mutual Financial Group. The Corporation matches employee contributions up to five percent of each eligible employee's salary. The Board of Directors of the Corporation has the authority to amend or terminate this benefit.

NOTE 6 – INTER-COMPANY TRANSACTIONS

The Middle School pays all of the expenses of the School. The School pays a flat fee to the Middle School for its share of costs: Below is a breakdown of the associated costs:

Salaries and Payroll Taxes - Teachers and Administration	\$ 463,170
Food Service	20,905
Afterschool Program	18,150
Student Transportation Services - Field Trips	6,900
Supplies and Curriculum	14,850
Facilities Costs	17,862
Accounting Services	8,650
Information Services	5,575
Operation of Plant	52,959
Maintenance of Plant	16,397
Debt Retirement	16,582
Total	<u>\$ 642,000</u>

NOTE 7 – CONTINGENCIES

The School is subject to occasional lawsuits and claims arising in the normal conduct of business. In the opinion of management, the ultimate disposition of these matters, if any, will not have a significant impact on the financial position of the School.

Budgetary Comparison Schedule – General Fund
For the Year Ended June 30, 2016
Alachua Learning Academy Elementary School
A Component Unit of the Alachua County District School Board

	BUDGETED AMOUNTS		Actual Amounts	Variance with Final Budget
	Original	Final		
Revenues				
State Revenue:				
Florida Education Finance Program	\$ 686,239	\$ 713,516	\$ 713,516	\$ --
State Recognition Program	11,150	10,580	10,580	--
Other State Revenue	2,080	2,340	2,340	--
Local Revenue:				
Interest	311	122	122	--
Total Revenues	699,780	726,558	726,558	--
Expenditures and Changes in Fund Balances				
Expenditures:				
Current:				
Instruction	328,748	301,733	301,733	--
Instructional Support Services	13,581	--	--	--
General Support	278,370	257,715	257,715	--
Community Service	9,500	18,150	18,150	--
Total Expenditures	630,199	577,598	577,598	--
Excess of Revenues Over Expenditures	69,581	148,960	148,960	--
Fund Balances, July 1, 2015	--	116,754	116,754	--
Fund Balances, June 30, 2016	\$ --	\$ 265,714	\$ 265,714	\$ --

Note to Schedule:

An annual Budget is adopted on the modified accrual basis of accounting, consistent with generally accepted accounting principles. Amendments to the budget can only be made with the approval of the Board of Directors. The fund is the legal level of control.

Budgetary Comparison Schedule – Special Revenue Fund
For the Year Ended June 30, 2016
Alachua Learning Academy Elementary School
A Component Unit of the Alachua County District School Board

	BUDGETED AMOUNTS		Actual Amounts	Variance with Final Budget
	Original	Final		
Revenues				
Federal through State:				
Title I Grant	\$ 39,000	\$ 37,635	\$ 37,635	\$ --
Other State Revenue	--	1,254	1,254	--
Total Revenues	39,000	38,889	38,889	--
Expenditures and Changes in Fund Balances				
Expenditures:				
Current:				
Instruction	39,000	38,889	38,889	--
Total Expenditures	39,000	38,889	38,889	--
Excess of Revenues Over Expenditures	--	--	--	--
Fund Balances, July 1, 2015	--	--	--	--
Fund Balances, June 30, 2016	\$ --	\$ --	\$ --	\$ --

Note to Schedule:

An annual Budget is adopted on the modified accrual basis of accounting, consistent with generally accepted accounting principles. Amendments to the budget can only be made with the approval of the Board of Directors. The fund is the legal level of control.

Kattell and Company, P.L.

Certified Public Accountants Serving the Nonprofit Community

808-B NW 16th Avenue Gainesville, Florida 32601 TEL: 352-395-6565 FAX: 352-395-6636 www.kattell.com

COMMUNICATION WITH THOSE CHARGED WITH GOVERNANCE

October 13, 2016

To the Board of Directors
Alachua Learning Center, Inc.

We have audited the special purpose financial statements of Alachua Learning Academy Elementary School (the School), a program of Alachua Learning Center, Inc., for the year ended June 30, 2016, and have issued our report thereon dated October 13, 2016. Professional standards require that we provide you with information about our responsibilities under generally accepted auditing standards, as well as certain information related to the planned scope and timing of our audit. We have communicated such information in our engagement letter to you dated June 23, 2016. Professional standards also require that we communicate to you the following information related to our audit.

Qualitative Aspects of Accounting Practices

Accounting Policies. Management is responsible for the selection and use of appropriate accounting policies. The significant accounting policies used by the School are described in the notes to the financial statements. No new accounting policies were adopted and the application of existing policies was not changed during the year. We noted no transactions entered into by the School during the year for which there is a lack of authoritative guidance or consensus. All significant transactions have been recognized in the financial statements in the proper period.

Accounting Estimates. Accounting estimates are an integral part of the financial statements prepared by management and are based on management's knowledge and experience about past and current events and assumptions about future events. Certain accounting estimates are particularly sensitive because of their significance to the financial statements and because of the possibility that future events affecting them may differ significantly from those expected. There are no estimates that are particularly sensitive.

Disclosures. There are no disclosures that are particularly sensitive.

Corrected and Uncorrected Misstatements. Professional standards require us to accumulate all known and likely misstatements identified during the audit, other than those that are trivial, and communicate them to the appropriate level of management. We have communicated all known and likely adjustments to management and all adjustments have been reflected in the financial statements.

Our Working Relationship with Management

Difficulties Encountered in Performing the Audit. We encountered no difficulties in dealing with management in performing and completing our audit.

Disagreements with Management. For purposes of this letter, professional standards define a disagreement with management as a financial accounting, reporting, or auditing matter, whether or not resolved to our satisfaction, that could be significant to the financial statements or the auditor's report. We are pleased to report that no such disagreements arose during the course of our audit.

Management Representations. We have requested certain representations from management that are included in the management representation letter.

Management Consultations with Other Independent Accountants. In some cases, management may decide to consult with other accountants about auditing and accounting matters, similar to obtaining a "second opinion" on certain situations. If a consultation involves application of an accounting principle to the School's financial statements or a determination of the type of auditor's opinion that may be expressed on those statements, our professional standards require the consulting accountant to check with us to determine that the consultant has all the relevant facts. To our knowledge, there were no such consultations with other accountants.

Consultations Prior to Engagement. We generally discuss a variety of matters, including the application of accounting principles and auditing standards, with management each year prior to retention as the School's auditors. However, these discussions occurred in the normal course of our professional relationship and our responses were not a condition to our retention.

* * * * *

This letter is intended solely for the information and use of management and the Board of Directors of the School and is not intended to be and should not be used by anyone other than these specified parties.

Very truly yours,

Kattell and Company, P.L.

Kattell and Company, P.L.

Certified Public Accountants Serving the Nonprofit Community

808-B NW 16th Avenue Gainesville, Florida 32601 TEL: 352-395-6565 FAX: 352-395-6636 www.kattell.com

MANAGEMENT LETTER

To the Board of Directors,
Alachua Learning Center, Inc.

October 13, 2016

Report on the Financial Statements. We have audited the financial statements of Alachua Learning Academy Elementary School (the School), as of and for the fiscal year ended June 30, 2016, and have issued our report thereon dated October 13, 2016.

Auditors' Responsibility. We conducted our audit in accordance with auditing standards generally accepted in the United States of America and the standards applicable to financial audits contained in *Government Auditing Standards*, issued by the Comptroller General of the United States; and Chapter 10.850, Rules of the Auditor General.

Other Reports and Schedules. We have issued our Independent Auditors' Report on Internal Control over Financial Reporting and on Compliance and Other Matters Based on an Audit of the Financial Statements Performed in Accordance with *Government Auditing Standards*, and Schedule of Findings. Disclosures in that report and schedule, which are dated October 13, 2016, should be considered in conjunction with this management letter.

Prior Audit Findings. Section 10.854(1)(e)1., Rules of the Auditor General, requires that we determine whether or not corrective actions have been taken to address findings and recommendations made in the preceding annual financial audit report. In that regard, there are no uncorrected findings to report.

Official Title. Section 10.854(1)(e)5, Rules of the Auditor General, requires the name or official title of the entity. The official title of the entity is Alachua Learning Academy Elementary School.

Financial Condition. Sections 10.854(1)(e)2., Rules of the Auditor General requires that we report the results of our determination as to whether or not the School has met one or more of the conditions described in Section 218.503(1), Florida Statutes, and identification of the specific condition(s) met. In connection with our audit, we determined that the School did not meet any of the conditions described in Section 218.503(1), Florida Statutes.

Pursuant to Sections 10.854(1)(e)6.a. and 10.855(12), Rules of the Auditor General, we applied financial condition assessment procedures for the School. It is management's responsibility to monitor the School's financial condition, and our financial condition assessment was based in part on representations made by management and the review of financial information provided by same.

Transparency. Sections 10.854(1)(e)7. and 10.855(13), Rules of the Auditor General, require that we report the results of our determination as to whether the School maintains on its Web site the information specified in Section 1002.33(9)(p), Florida Statutes. In connection with our audit, we determined that the School maintained on its Web site the information specified in Section 1002.33(9)(p), Florida Statutes.

Other Matters Section 10.854(1)(e)3, Rules of the Auditor General, requires that we address in the management letter any recommendations to improve financial management. In connection with our audit, we did have recommendations as described in Finding 2016-001.

Section 10.854(1)(e)4, Rules of the Auditor General, requires that we address noncompliance with provisions of contracts or grant agreements, or abuse, that have occurred, or are likely to have occurred, that have an effect on the financial statements that is less than material but which warrants the attention of those charged with governance. In connection with our audit, we did not have any such findings.

Purpose of this Letter. Our management letter is intended solely for the information and use of the Legislative Auditing Committee, members of the Florida Senate and the Florida House of Representatives, the Florida Auditor General, the local district school board, the Board of Directors and management of the School, and is not intended to be and should not be used by anyone other than these specified parties.

* * * * *

Thank you for the cooperation and courtesies extended to us during the course of the audit. Please let us know if you have any questions or comments concerning this letter, our accompanying reports, or any other matters.

Kattell and Company, P.L.

Kattell and Company, P.L.

Certified Public Accountants Serving the Nonprofit Community

808-B NW 16th Avenue Gainesville, Florida 32601 TEL: 352-395-6565 FAX: 352-395-6636 www.kattell.com

INDEPENDENT AUDITORS' REPORT ON INTERNAL CONTROL OVER FINANCIAL REPORTING AND ON COMPLIANCE AND OTHER MATTERS

To the Board of Directors
Alachua Learning Center, Inc.

We have audited, in accordance with auditing standards generally accepted in the United States of America and the standards applicable to financial audits contained in *Government Auditing Standards*, issued by the Comptroller General of the United States, the financial statements of the governmental activities and each major fund of Alachua Learning Academy Elementary School (the School), as of and for the year ended June 30, 2016, and the related notes to financial statements, which collectively comprise the School's basic financial statements, and have issued our report thereon dated October 13, 2016.

Internal Control over Financial Reporting

In planning and performing our audit of the financial statements, we considered the School's internal control over financial reporting (internal control) to determine the audit procedures that are appropriate in the circumstances for the purpose of expressing our opinions on the financial statements but not for the purpose of expressing an opinion on the effectiveness of the School's internal control. Accordingly, we do not express an opinion on the effectiveness of the School's internal control.

A deficiency in internal control exists when the design or operation of a control does not allow management or employees, in the normal course of performing their assigned functions, to prevent, or detect and correct misstatements on a timely basis. A material weakness is a deficiency, or combination of deficiencies, in internal control, such that there is a reasonable possibility that a material misstatement of the School's financial statements will not be prevented, or detected and corrected on a timely basis. A significant deficiency is a deficiency, or a combination of deficiencies, in internal control that is less severe than a material weakness, yet important enough to merit attention by those charged with governance.

Our consideration of internal control was for the limited purpose described in the first paragraph of this section and was not designed to identify all deficiencies in internal control that might be material weaknesses or significant deficiencies. Given these limitations, during our audit we did not identify any deficiencies in internal control that we consider to be material weaknesses, as defined above. However, material weaknesses may exist that have not been identified.

Compliance and Other Matters

As part of obtaining reasonable assurance about whether the School's financial statements are free of material misstatement, we performed tests of its compliance with certain provisions of laws, regulations, contracts and grants, noncompliance with which could have a direct and material effect on the determination of financial statement amounts. However, providing an opinion on compliance with those provisions was not an objective of our audit and, accordingly, we do not express such an opinion. The results of our tests disclosed no instances of noncompliance or other matters that are required to be reported under *Government Auditing Standards*.

Purpose of this Report

The purpose of this report is solely to describe the scope of our testing of internal control and compliance and the results of that testing, and not to provide an opinion on the effectiveness of the School's internal control or on compliance. This report is an integral part of an audit performed in accordance with *Government Auditing Standards* in considering the School's internal control and compliance. Accordingly, this communication is not suitable for any other purpose.

* * * * *

As required by the Rules of the Auditor General of the State of Florida, we noted certain matters that we reported to management of the School in the management letter dated October 13, 2016.

October 13, 2016
Gainesville, Florida

Kattell and Company, P.L.

Schedule of Findings
June 30, 2016
Alachua Learning Academy Elementary School
A Component Unit of the Alachua County District School Board

RECOMMENDATION TO IMPROVE FINANCIAL MANAGEMENT

2016-001 Employee Compensation

Finding – Some employees are paid "stipends" which are not included in the employee contract. There is no contract or addendum which supports the paying of these amounts.

Recommendation – All amounts to be paid as employee compensation should be documented and approved prior to payment.



ALACHUA LEARNING ACADEMY

Elementary & Middle School

Established 1999

10/13/2016

Kattel and Company, P.L.
808-B NW 16th Ave
Gainesville, FL 32601

RE: Alachua Learning Academy Elementary School Audit 6/2016

Dear Sirs/Madam:

We have received the results of the June 30, 2016 audit report of our school conducted by your firm.

We will make the following adjustments:

- Employee Compensation – All amounts to be paid as employee compensation should be documented and approved prior to payment.

We appreciate your professionalism and look forward to working with you again.

Sincerely,

Krishna Rivera
Administrative Director

Educating students to become exemplary citizens of the world with H.E.A.R.T..
PO Box 1389 - 11100 SR 235 Alachua FL 32616 - Ph: (386) 418-2080 Fax: (386) 418- 4116