

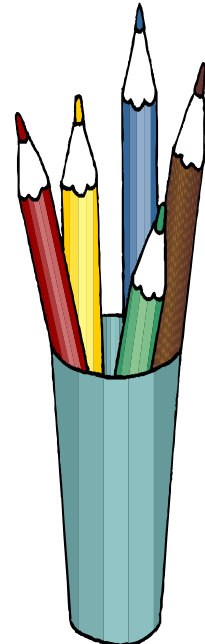
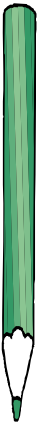
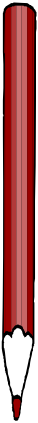
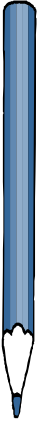
Alachua Learning Center Elementary School

An Elementary School Program of
Alachua Learning Center, Inc.

A Component Unit of the Alachua County District School Board

Financial Statements
And
Independent Auditors' Report

June 30, 2013



KATTELL AND COMPANY, P.L.

A professional accounting firm serving the nonprofit community

**808-B NW 16th Avenue
Gainesville, Florida 32601**

(352) 395-6565



Financial Statements and Independent Auditors' Reports

June 30, 2013

Alachua Learning Center Elementary School

A Component Unit of the Alachua County District School Board

Contents

INDEPENDENT AUDITORS' REPORT	1
REQUIRED SUPPLEMENTARY INFORMATION:	
Management's Discussion and Analysis (MD&A)	2
SPECIAL PURPOSE FINANCIAL STATEMENTS:	
Government-wide Financial Statements:	
Statement of Net Position.....	5
Statement of Activities.....	6
Governmental Fund Financial Statements:	
Balance Sheet.....	7
Reconciliation of the Balance Sheet to the Statement of Net Position	8
Statement of Revenues, Expenditures and Changes in Fund Balances.....	9
Reconciliation of the Statement of Revenues, Expenditures and Changes in Fund Balances to the Statement of Activities	10
Notes to Financial Statements.....	11
REQUIRED SUPPLEMENTARY INFORMATION:	
Budgetary Comparison Schedule – General Fund.....	17
Budgetary Comparison Schedule – Special Revenue Fund.....	18
ADDITIONAL ELEMENTS:	
Communication with Those Charged with Governance	19
Management Letter.....	20
Report on Internal Control Over Financial Reporting and on Compliance and Other Matters	21
School's Response	22

Kattell and Company, P.L.

Certified Public Accountants Serving the Nonprofit Community

808-B NW 16th Avenue Gainesville, Florida 32601 TEL: 352-395-6565 FAX: 352-395-6636 www.kattell.com

INDEPENDENT AUDITORS' REPORT

To the Board of Directors
Alachua Learning Center Elementary School

October 24, 2013

Report on Financial Statements

We have audited the accompanying financial statements of the governmental activities and each major fund of the Alachua Learning Center Elementary School (the School), a component unit of the Alachua County District School Board, as of and for the year ended June 30, 2013, and the related notes to the financial statements, which collectively comprise the School's basic financial statements as listed in the table of contents.

Management's Responsibility for the Financial Statements. Management is responsible for the preparation and fair presentation of these financial statements in accordance with the accounting principles generally accepted in the United States of America; this includes the design, implementation, and maintenance of internal control relevant to the preparation and fair presentation of financial statements that are free from material misstatement, whether due to fraud or error.

Auditors' Responsibility. Our responsibility is to express opinions on these financial statements based on our audit. We conducted our audit in accordance with auditing standards generally accepted in the United States of America and the standards applicable to financial audits contained in *Government Auditing Standards*, issued by the Comptroller General of the United States. Those standards required that we plan and perform the audit to obtain reasonable assurance about whether the financial statements are free from material misstatement.

An audit involves performing procedures to obtain audit evidence about the amounts and disclosures in the financial statements. The procedures selected depend on the auditor's judgment, including the assessment of the risks of material misstatement of the financial statements, whether due to fraud or error. In making those risk assessments, the auditor considers internal control relevant to the entity's preparation and fair presentation of the financial statements in order to design audit procedures that are appropriate in the circumstances, but not for the purpose of expressing an opinion on the effectiveness of the entity's internal control. Accordingly, we express no such opinion. An audit also includes evaluating the appropriateness of accounting policies used and the reasonableness of significant accounting estimates made by management, as well as evaluating the overall presentation of the financial statements.

We believe that the audit evidence we have obtained is sufficient and appropriate to provide a basis for our audit opinions.

Special Purpose Financial Statements. The School is a program of Alachua Learning Center, Inc. As discussed in Note 1 to the financial statements, these special purpose financial statements are those of the School only and are not intended to be a complete presentation of the governmental activities and each major fund of Alachua Learning Center, Inc.

Opinions. In our opinion, the financial statements referred to above present fairly, in all material respects, the respective financial position of the governmental activities and each major fund of the School as of June 30, 2013, and the respective changes in financial position thereof for the year then ended in accordance with accounting principles generally accepted in the United States of America.

Other Matters - Required Supplementary Information. Accounting principles generally accepted in the United States of America require that management's discussion and analysis and the budgetary comparison schedule, as listed in the table of contents, be presented to supplement the basic financial statements. Such information, although not a part of the basic financial statements, is required by the Governmental Accounting Standards Board who considers it to be an essential part of financial reporting for placing the basic financial statements in an appropriate operational, economic, or historical context. We have applied certain limited procedures to the required supplementary information in accordance with auditing standards generally accepted in the United States of America, which consisted of inquiries of management about the methods of preparing the information and comparing the information for consistency with management's responses to our inquiries, the basic financial statements, and other knowledge we obtained during our audit of the basic financial statements. We do not express an opinion or provide any assurance on the information because the limited procedures do not provide us with sufficient evidence to express an opinion or provide any assurance.

Other Reporting Required by Government Auditing Standards

In accordance with *Government Auditing Standards*, we have also issued our report dated October 24, 2013 on our consideration of the School's internal control over financial reporting (internal control) and on our tests of its compliance with certain provisions of laws, regulations, contracts, and grant agreements and other matters. The purpose of that report is to describe the scope of our testing of internal control and compliance and the results of that testing, and not to provide an opinion on internal control or on compliance. That report is an integral part of an audit performed in accordance with *Government Auditing Standards* in considering the School's internal control and compliance.

Kattell and Company, P.L.

Gainesville, Florida

Management's Discussion and Analysis

June 30, 2013

Alachua Learning Center Elementary School

A Component Unit of the Alachua County District School Board

This discussion and analysis of the School's financial performance provides an overview of the School's financial activities for the fiscal year ended June 30, 2013. Please read it in conjunction with the School's financial statements, which follow this section.

The following are various financial highlights for fiscal year 2013:

- The School's overall Net Position increased by approximately \$28,000, which is a 406% increase.
- Total ending unrestricted Net Position was \$34,962.
- The School had total expenses for the year of about \$662,000 compared to revenues of approximately \$690,000.
- The School educated 106 and 111 students in the years ending June 30, 2013 and 2012, respectively, serving grades K-5.

OVERVIEW OF THE SPECIAL PURPOSE FINANCIAL STATEMENTS

This annual report contains government-wide financial statements that report on the School's activities as a whole and fund financial statements that report on the School's individual funds.

Government-wide Financial Statements

The first financial statement is the Statement of Net Position. This statement includes all of the School's assets and liabilities using the accrual basis of accounting. Accrual accounting is similar to the accounting used by most private-sector companies. All of the current year revenues and expenses are recorded, regardless of when cash is received or paid. Net Position – the difference between assets and liabilities – can be used to measure the School's financial position.

The second financial statement is the Statement of Activities. This statement is also shown using the accrual basis of accounting. It shows the increases and decreases in net position during the fiscal year. Over time, the increases or decreases in net position are useful indicators of whether the School's financial health is improving or deteriorating. However, other non-financial factors, such as enrollment levels or changes in state funding, must also be considered when assessing the overall health of the School.

In these statements, all of the School's activities are considered to be governmental activities. The School has no business-type activities, which are generally financed in whole or in part by fees charged to external parties for goods or services.

Fund Financial Statements

Following the government-wide financial statements are the fund financial statements. They provide more detailed information about the School's funds.

The School maintains three individual governmental funds, the General Fund, Special Revenue Fund and Capital Projects Fund. All three are considered to be major funds and, accordingly, they are separately displayed.

Governmental funds are accounted for using modified accrual accounting. Modified accrual accounting focuses on available cash and other financial assets that can readily be converted to cash. This provides a shorter-term view of the fund's financial position. A reconciliation is provided with these statements, which helps to explain the differences between the fund financial statements and the government-wide financial statements.

Management's Discussion and Analysis
June 30, 2013
Achua Learning Center Elementary School, Inc.
A Component Unit of the Achua County District School Board

CONDENSED FINANCIAL INFORMATION

The following table presents condensed, government-wide current year data about net position and changes in net position.

	2013 Governmental Activities	2012 Governmental Activities
Net Position		
Assets:		
Non-capital Assets	\$ 69,909	\$ 101,467
Total Assets	<u>69,909</u>	<u>101,467</u>
Liabilities:		
Current Liabilities	34,947	94,555
Total Liabilities	<u>34,947</u>	<u>94,555</u>
Net Position:		
Unrestricted	34,962	6,912
Total Net Position	<u>\$ 34,962</u>	<u>\$ 6,912</u>
Change in Net Position		
Program Revenues:		
Capital Grants & Contributions	\$ 32,697	\$ 37,456
General Revenues:		
Title I Grant	35,412	35,426
Florida Education Finance Program	610,652	628,777
Other State Revenues	11,659	13,529
Unrestricted Investment Earnings	31	42
Total Revenues	<u>690,451</u>	<u>715,230</u>
Program Expenses:		
Instruction	360,564	392,720
Instructional Support Services	12,893	20,760
General Support	288,944	294,838
Total Expenses	<u>662,401</u>	<u>708,318</u>
Change in Net Position	28,050	6,912
Beginning Net Position	6,912	--
Ending Net Position	<u>\$ 34,962</u>	<u>\$ 6,912</u>

Management's Discussion and Analysis
June 30, 2013
Alachua Learning Center Elementary School
A Component Unit of the Alachua County District School Board

OVERALL FINANCIAL POSITION AND RESULTS OF OPERATIONS

Governmental Activities. The governmental activities generated \$32,697 in program revenues and \$657,754 of general revenues, and incurred \$662,401 of program expenses. This resulted in a \$28,050 increase in Net Position.

THE SCHOOL'S INDIVIDUAL FUNDS

General Fund. The fund balance of the General Fund increased by \$28,050, from \$6,912 to \$34,962.

Special Revenue Fund. The fund balance of the Special Revenue Fund remained the same at \$0. This is expected due to the nature of Title I funding.

Capital Projects Fund. The fund balance of the Capital Projects Fund remained the same at \$0. Eligible expenditures exceeded capital outlay funding for the year.

BUDGETARY HIGHLIGHTS

General Fund. There were no significant differences between original and final budgets. There were no differences between the final budget and actual amounts.

CAPITAL ASSETS AND DEBT ADMINISTRATION

The School and the Alachua Learning Center Middle School are programs operated by Alachua Learning Center, Inc. (the Corporation). The Corporation has elected to report all capital assets and all long term debt in the special purpose financial statements of the Middle School. As such, there will be no capital asset and debt administration activities reported in these special purpose financial statements.

ECONOMIC FACTORS

The School currently is not aware of any conditions that are expected to have a significant effect on the School's financial position or results of operations.

CONTACTING THE SCHOOL'S FINANCIAL MANAGEMENT

This financial report is designed to provide a general overview of the School's finances and to show the School's accountability for the money it receives. If you have any questions about this report or need additional financial information, contact Tom Allin, Director; PO Box 1389, Alachua, Florida 32616.

Statement of Net Position
June 30, 2013
Alachua Learning Center Elementary School
A Component Unit of the Alachua County District School Board

	Governmental Activities
Assets	
Cash	\$ 65,947
Accounts Receivable	3,503
Prepaid Expenses	<u>459</u>
Total Assets	<u>69,909</u>
Liabilities	
Accounts Payable	3,427
Salaries Payable	20,565
Due to Middle School	<u>10,955</u>
Total Liabilities	<u>34,947</u>
Net Position	
Unrestricted	<u>34,962</u>
Total Net Position	<u><u>\$ 34,962</u></u>

See accompanying notes.

Statement of Activities
For the Year Ended June 30, 2013
Alachua Learning Center Elementary School
A Component Unit of the Alachua County District School Board

	Program Revenues			Net (Expense) Revenue and Change in Net Assets
	Expenses	Charges for Services	Operating Grants and Contributions	
Functions/Programs:				
Governmental Activities:				
Instruction	\$ (360,564)	\$ --	\$ --	\$ (360,564)
Instructional Support Services	(12,893)	--	--	(12,893)
General Support	(288,944)	--	--	(256,247)
Total	<u>\$ (662,401)</u>	<u>\$ --</u>	<u>\$ --</u>	<u>\$ (629,704)</u>

General Revenues:

Federal Through State:	
Title I Grant	35,412
State Revenue:	
Florida Education Finance Program	610,652
Other State Revenues	11,659
Unrestricted Investment Earnings	<u>31</u>
Total General Revenues	<u>657,754</u>
Change in Net Position	28,050
Net Position – Beginning of Year	<u>6,912</u>
Net Position – End of Year	<u>\$ 34,962</u>

See accompanying notes.

Balance Sheet – Governmental Funds
June 30, 2013
Alachua Learning Center Elementary School
A Component Unit of the Alachua County District School Board

	<u>General Fund</u>	<u>Special Revenue Fund</u>	<u>Capital Projects Fund</u>	<u>Total Governmental Funds</u>
Assets				
Cash	\$ 65,947	\$ --	\$ --	\$ 65,947
Accounts Receivable	3,503	--	--	3,503
Prepaid Expenses	459	--	--	459
Total Assets	<u>69,909</u>	<u>--</u>	<u>--</u>	<u>69,909</u>
Liabilities and Fund Balances				
Liabilities:				
Accounts Payable	3,427	--	--	3,427
Salaries Payable	20,565	--	--	20,565
Due to Middle School	10,955	--	--	10,955
Total Liabilities	<u>34,947</u>	--	--	<u>34,947</u>
Fund Balances:				
Non-spendable – Prepaid Expenses	459	--	--	459
Unassigned	34,503	--	--	34,503
Total Fund Balances	<u>34,962</u>	--	--	<u>34,962</u>
Total Liabilities and Fund Balances	<u>\$ 69,909</u>	<u>\$ --</u>	<u>\$ --</u>	<u>\$ 69,909</u>

See accompanying notes.

**Reconciliation of the Balance Sheet to the Statement of Net Position –
Governmental Funds**

June 30, 2013

Alachua Learning Center Elementary School
A Component Unit of the Alachua County District School Board

Fund Balances – Total Governmental Funds	\$ 34,962
---	-----------

Amounts reported for Governmental activities in the Statement of Net Position are different because:

Capital assets used in governmental activities are not reported in the governmental funds:

Capital Assets – Net of Accumulated Depreciation	--
--	----

Net Position of Governmental Activities	<u><u>\$ 34,962</u></u>
--	-------------------------

See accompanying notes.

**Statement of Revenues, Expenditures and Changes in Fund Balances -
Governmental Funds**

For the Year Ended June 30, 2013

Alachua Learning Center Elementary School
A Component Unit of the Alachua County District School Board

	<u>General Fund</u>	<u>Special Revenue Fund</u>	<u>Capital Projects Fund</u>	<u>Total Governmental Funds</u>
Revenues				
Federal through State:				
Title I Grant	\$ --	\$ 35,412	\$ --	\$ 35,412
State Revenue:				
Florida Education Finance Program	610,652	--	--	610,652
Public Education Capital Outlay	--	--	32,697	32,697
Other State Revenue	11,659	--	--	11,659
Local Revenue:				
Interest	31	--	--	31
Total Revenues	<u>622,342</u>	<u>35,412</u>	<u>32,697</u>	<u>690,451</u>
Expenditures and Changes in Fund Balances				
Expenditures:				
Current:				
Instructional	325,152	35,412	--	360,564
Instructional Support Services	12,893	--	--	12,893
General Support	256,247	--	--	256,247
Capital Outlay	--	--	32,697	32,697
Total Expenditures	<u>594,292</u>	<u>35,412</u>	<u>32,697</u>	<u>662,401</u>
Excess of Revenues Over/(Under) Expenditures	28,050	--	--	28,050
Fund Balances, July 1, 2012	<u>6,912</u>	<u>--</u>	<u>--</u>	<u>6,912</u>
Fund Balances, June 30, 2013	<u>\$ 34,962</u>	<u>\$ --</u>	<u>\$ --</u>	<u>\$ 34,962</u>

See accompanying notes.

**Reconciliation of the Statement of Revenues, Expenditures and Changes in
Fund Balances to the Statement of Activities - Governmental Funds**
For the Year Ended June 30, 2013
Alachua Learning Center Elementary School
A Component Unit of the Alachua County District School Board

Excess of Revenues over Expenditures – Total Governmental Funds \$ 28,050

Amounts reported for governmental activities in the Statement of Activities are different because:

Governmental funds report capital outlays as expenditures. However, in the Statement of Activities, the cost of those assets is depreciated over their estimated useful lives.

Current Year Expenditures for Capital Assets: ----- --

Change in Net Position of Governmental Activities \$ 28,050

See accompanying notes.

Notes to the Financial Statements

June 30, 2013

Alachua Learning Center Elementary School

A Component Unit of the Alachua County District School Board

NOTE 1 – REPORTING ENTITY

Alachua Learning Center, Inc. (the Corporation) is a not-for-profit corporation organized pursuant to Chapter 617, Florida Statutes, the Florida Not For Profit Corporation Act, and Section 1002.33, Florida Statutes. The Corporation operates an elementary school under the name “Alachua Learning Center Elementary School” and a middle school under the name “Alachua Learning Center Middle School” (Middle School). These special purpose financial statements are those of the Alachua Learning Center Elementary School (the School) only. The governing body of the School is the Corporation’s Board of Directors. The School is a program of the Corporation; the Corporation is considered a component unit of the Alachua County District School Board (the District).

The general operating authority of the School is contained in Section 1002.33, Florida Statutes. The School operates under a charter of the District, the sponsoring entity. The current charter is effective until June 30, 2016, and may be renewed provided that a program review demonstrates that certain criteria addressed in Section 1002.33(7), Florida Statutes, have been successfully accomplished. At the end of the term of the charter, the District may choose not to renew the charter under grounds specified in the charter, in which case the District is required to notify the School in writing at least 90 days prior to the charter’s expiration. Pursuant to Section 1002.33(8)(e), Florida Statutes, the charter school contract provides that in the event the School is dissolved or terminated, any unencumbered funds and all School property purchased with public funds automatically revert to the District. During the term of the charter, the District may also terminate the charter if good cause is shown. The School is considered a component unit of the District.

Criteria for determining if other entities are potential component units of the School which should be reported with the School’s basic financial statements are identified and described in the Governmental Accounting Standards Board’s (GASB) *Codification of Governmental Accounting and Financial Reporting Standards*, Sections 2100 and 2600. The application of these criteria provide for identification of any entities for which the School is financially accountable and other organizations for which the nature and significance of their relationship with the School are such that exclusion would cause the School’s basic financial statements to be misleading or incomplete. Based on these criteria, no component units are included within the reporting entity of the School.

NOTE 2 – SUMMARY OF SIGNIFICANT ACCOUNTING POLICIES

The accounting policies of the School conform to generally accepted accounting principles as applicable to governments. The more significant accounting policies are described below to enhance the usefulness of the financial statements to the reader.

Government-wide Financial Statements

The government-wide financial statements (the Statement of Net Position and the Statement of Activities) report information on all of the activities of the School. Governmental activities are reported separately from business-type activities, which rely on fees charged to external parties as their primary revenues. The School has no business-type activities.

Any internal inter-fund activity has been eliminated from the government-wide financial statements.

Notes to the Financial Statements

June 30, 2013

Alachua Learning Center Elementary School

A Component Unit of the Alachua County District School Board

NOTE 2 – SUMMARY OF SIGNIFICANT ACCOUNTING POLICIES (continued)

Government-wide Financial Statements (concluded)

The Statement of Net Position reports the School's financial position as of the end of the fiscal year. In this statement, the School's net position is reported in three categories: net investment in capital assets; restricted net position; and unrestricted net position.

The Statement of Activities is displayed using a net-cost format and reports the degree to which the direct expenses of a given function are offset by program revenues. Direct expenses are those that are clearly identifiable with a specific function. Program revenues include 1) charges for services that are directly related to a given function and 2) grants and contributions that are restricted to meeting the operational or capital requirements of a particular function. Other items not properly included among program revenues are reported instead as general revenues.

Fund Financial Statements

The financial transactions of the School are reported in individual funds in the fund financial statements. The governmental fund statements include reconciliations with brief explanations to better identify the relationship between the government-wide statements and the statements for the governmental funds.

The following funds are used by the School:

GOVERNMENTAL FUNDS

General Fund – The General Fund is the general operating fund of the School. It is used to account for all financial resources, except those associated with grants that are restricted to specified uses.

Special Revenue Fund – The Special Revenue Fund is used to account for financial resources associated with grants that are restricted to operational uses.

Capital Projects Fund – The Capital Projects Fund is used to account for financial resources associated with grants that are restricted to capital uses.

In the accompanying fund financial statements, the General Fund, Special Revenue Fund and Capital Projects Fund are all considered to be major funds and, therefore, are separately displayed. The School has no non-major funds.

Measurement Focus and Basis of Accounting

The government-wide financial statements are reported using the economic resources measurement focus and the accrual basis of accounting. Revenues are recorded when earned and expenses are recorded when a liability is incurred, regardless of the timing of related cash flows.

Governmental fund financial statements are reported using the current financial resources measurement focus and the modified accrual basis of accounting. Revenues are recognized as soon as they are both measurable and available. Revenues are considered to be available when they are collectible within the current period or soon enough thereafter to pay liabilities of the current period. For this purpose, the School considers revenues to be available if they are collected within 60 days of the end of the current fiscal period. Expenditures generally are recorded when the related fund liability is incurred. However, debt service expenditures are recorded only when payment is due.

Notes to the Financial Statements

June 30, 2013

Alachua Learning Center Elementary School

A Component Unit of the Alachua County District School Board

NOTE 2 – SUMMARY OF SIGNIFICANT ACCOUNTING POLICIES (continued)

Measurement Focus and Basis of Accounting (Concluded)

Most revenues are considered to be susceptible to accrual and have been measured in the current fiscal period. Certain other items are considered to be measurable and available only when cash is received.

Cash

Cash consists of deposits in financial institutions. At times, such deposits may be in excess of the Federal Deposit Insurance Corporation (FDIC) insurance limit. At June 30, 2013, there were no amounts exceeding FDIC insurance coverage. The School has no policy regarding deposit custodial credit risk.

Prepays

Certain payments to vendors reflect costs applicable to future accounting periods and are recorded as prepaid items in both government-wide and fund financial statements. Prepaid assets are reported as “non-spendable” in the funds financial statements to indicate that prepaids do not represent available expendable resources.

Capital Assets and Depreciation

The School is a program of the Corporation. The School contributes to the purchase of capital assets, but the Corporation has elected to report all capital assets in the special purpose financial statements of the Middle School. As such, the School does not report capital assets in these special purpose financial statements. During the year, the School contributed \$5,658 toward the purchase of capital assets. These are reported as general support expenditures/expenses.

Revenue Sources

Revenues for current operations are received primarily from the District pursuant to the funding provisions included in the School’s charter. In accordance with the funding provisions of the charter and Florida Statutes, the School reports the number of full-time equivalent (FTE) students and related data to the District. Under the provisions of Florida Statutes the District reports the number of FTE students and related data to the Florida Department of Education (FDOE) for funding through the Florida Education Finance Program. Funding for the School is adjusted during the year to reflect the revised calculations by the FDOE under the Florida Educational Finance Program and the actual weighted FTE students reported by the School during the designated FTE student survey periods. The School also receives other financial assistance. This assistance is generally based on applications submitted to and approved by the granting agency.

Compensated Absences

The School’s employees had no unused sick and vacation time at the end of the school year. Therefore, no liability for compensated absences is recorded.

Notes to the Financial Statements

June 30, 2013

Alachua Learning Center Elementary School

A Component Unit of the Alachua County District School Board

NOTE 2 – SUMMARY OF SIGNIFICANT ACCOUNTING POLICIES (continued)

Long-term Liabilities

The School is a program of the Corporation. The School contributes to the payment of debt service, but the Corporation has elected to report long term liabilities in the special purpose financial statements of the Middle School. As such, the School does not report long term liabilities in these special purpose financial statements. During the year, the School contributed \$36,878 toward the payment of principal on long-term liabilities. These are reported as general support expenditures/expenses.

Net Position

Net position represents the difference between assets and liabilities and is reported in three categories as hereafter described. *Net investment in capital assets* represents capital assets net of accumulated depreciation and any outstanding debt related to those assets. Net position is reported as *restricted* when there are legal limitations imposed on their use by legislation, or external restrictions imposed by other governments, creditors, or grantors. The balance of the net position is reported as *unrestricted*.

When both restricted and unrestricted resources are available for use, it is the School's policy to use restricted resources first, and then unrestricted resources as they are needed.

Fund Balance Classifications

Governmental funds report separate classifications of fund balance.

Non-Spendable. The non-spendable fund balance classification includes amounts that cannot be spent because they are either (a) not in spendable form or (b) legally or contractually required to be maintained intact.

Restricted. The restricted fund balance is defined as having restrictions (a) externally imposed by creditors (such as through debt covenants), grantors, contributors, or laws or regulations of other governments, or (b) imposed by law through constitutional provisions or enabling legislation.

Committed. Committed fund balance is defined as amounts that can only be used for specific purposes pursuant to constraints imposed by formal action of the School's Board of Directors.

Assigned. Assigned fund balance is defined as amounts that are constrained by the intent of the School's Board of Directors to be used for specific purposes, but are neither restricted nor committed. The School has given the authority to assign fund balance to the School's Director. Assigned fund balance includes spendable fund balance amounts established by the Director that are intended to be used for specific purposes that are neither considered restricted nor committed. Assignment of fund balance may be (a) made for a specific purpose that is narrower than the general purposes of the government itself; and/or (b) used to reflect the appropriation of a portion of existing unassigned fund balance to eliminate a projected deficit in the subsequent year's budget in an amount no greater than the projected excess of expected expenditures over expected revenues. Assigned fund balance shall reflect management's intended use of resources as set forth each year by the Director. Assigned fund balance may or may not be appropriated for expenditure in the subsequent year depending on the timing of the project/reserve for which it was assigned.

Unassigned. Unassigned fund balance is the residual classification for the general fund.

Notes to the Financial Statements

June 30, 2013

Alachua Learning Center Elementary School

A Component Unit of the Alachua County District School Board

NOTE 2 – SUMMARY OF SIGNIFICANT ACCOUNTING POLICIES (concluded)

Fund Balance Classifications (Concluded)

It is the policy of the School that they will use restricted resources to the extent which they are available, then committed resources, followed by assigned resources. Once these are consumed the School will then use unassigned resources. The School does not have a formal policy requiring a minimum fund balance.

Use of Estimates

The preparation of financial statements in conformity with generally accepted accounting principles requires management to make various estimates. Actual results could differ from those estimates.

NOTE 3 – OPERATING LEASES

The Corporation has a lease for land for the School's premises which calls for payment in the amount of \$100 per student per October FTE count with a 2% increase each year. The lease began on November 1, 2007 and has a term of 10 years with an automatic renewal of five years. The minimum annual lease amount is \$10,000 per year for the next five years totaling \$50,000. Total paid for the fiscal year ending June 30, 2013, was \$17,160, of which \$11,183 was paid by the School and \$5,977 was paid by the Middle School. A member of the Corporation's board is also a member of ISKCON of Alachua County, Inc., the lessor.

NOTE 4 – RISK MANAGEMENT

The School is exposed to various risks of loss, including general liability, personal injury, workers compensation, and errors and omissions. To manage its risks, the School has purchased commercial insurance. Settled claims resulting from these risks have not exceeded commercial coverage in any of the past three years.

NOTE 5 – RETIREMENT BENEFIT

The School changed its retirement benefits policy during the year. At the beginning of the year, the School included in eligible full-time staff members' paychecks, a stipend intended as a retirement benefit; however, employees were under no obligation to treat it as such. The stipend was based on a percentage of their salary and longevity. Beginning the third year of service, the employee would receive a stipend of 5% of their base salary. This would increase to 10% beginning the fourth year of service and continuing thereafter. As of August 16, 2012, the School changed the retirement benefits to a 457b Deferred Compensation Plan managed by Mass Mutual Financial Group. The School matches employee contributions up to five percent of each eligible employee's salary.

The School paid \$11,633 and \$32,669 in retirement benefits for the years ending June 30, 2013, and June 30, 2012, respectively. The Corporation paid \$39,039 in retirement benefits for the year ending June 30, 2011, on behalf of employees who provided services to the elementary school students. The Board of Directors of the Corporation has the authority to amend or terminate this benefit.

Notes to the Financial Statements

June 30, 2013

Alachua Learning Center Elementary School

A Component Unit of the Alachua County District School Board

NOTE 6 – INTER-COMPANY TRANSACTIONS

The Middle School pays for the majority of the expenses for the School, which in turn reimburses the Middle School for its share of the costs of salaries, facilities, fixed assets and supplies, based on the proportion of students at each school.

NOTE 7 – OTHER RELATED PARTY TRANSACTIONS

The School employed a relative of an individual who served on the School's Board of Directors until that individual resigned from the Board in May 2013. The School paid this employee approximately \$48,000 in compensation during the year ended June 30, 2013.

NOTE 8 – CONTINGENCIES

The School is subject to occasional lawsuits and claims arising in the normal conduct of business. In the opinion of management, the ultimate disposition of these matters, if any, will not have a significant impact on the financial position of the School.

Budgetary Comparison Schedule – General Fund
For the Year Ended June 30, 2013
Alachua Learning Center Elementary School
A Component Unit of the Alachua County District School Board

	BUDGETED AMOUNTS		Actual Amounts	Variance with Final Budget
	Original	Final		
Revenues				
State Revenue:				
Florida Education Finance Program	\$ 615,000	\$ 610,652	\$ 610,652	\$ --
Other State Revenue	11,650	11,659	11,659	--
Local Revenue:				
Interest	--	31	31	--
Total Revenues	626,650	622,342	622,342	--
Expenditures and Changes in Fund Balances				
Expenditures:				
Current:				
Instructional	343,793	325,152	325,152	--
Instructional Support Services	14,247	12,893	12,893	--
General Support	268,610	256,247	256,247	--
Total Expenditures	626,650	594,292	594,292	--
Excess of Revenues Over Expenditures	--	28,050	28,050	--
Fund Balances, July 1, 2012	--	6,912	6,912	--
Fund Balances, June 30, 2013	\$ --	\$ 34,962	\$ 34,962	\$ --

Note to Schedule:

An annual Budget is adopted on the modified accrual basis of accounting, consistent with generally accepted accounting principles. Amendments to the budget can only be made with the approval of the Board of Directors. The fund is the legal level of control.

Budgetary Comparison Schedule – Special Revenue Fund
For the Year Ended June 30, 2013
Alachua Learning Center Elementary School
A Component Unit of the Alachua County District School Board

	BUDGETED AMOUNTS		Actual Amounts	Variance with Final Budget
	Original	Final		
Revenues				
Federal through State: Title I Grant	\$ 36,000	\$ 35,412	\$ 35,412	\$ --
Total Revenues	36,000	35,412	35,412	--
Expenditures and Changes in Fund Balances				
Expenditures:				
Current:				
Instructional	36,000	35,412	35,412	--
Total Expenditures	36,000	35,412	35,412	--
Excess of Revenues Over Expenditures	--	--	--	--
Fund Balances, July 1, 2012	--	--	--	--
Fund Balances, June 30, 2013	\$ --	\$ --	\$ --	\$ --

Note to Schedule:

An annual Budget is adopted on the modified accrual basis of accounting, consistent with generally accepted accounting principles. Amendments to the budget can only be made with the approval of the Board of Directors. The fund is the legal level of control.

Kattell and Company, P.L.

A Certified Public Accounting Firm Serving the Nonprofit Community

808-B NW 16th Avenue Gainesville, Florida 32601 TEL: 352-395-6565 FAX: 352-395-6636 www.kattell.com

COMMUNICATION WITH THOSE CHARGED WITH GOVERNANCE

October 24, 2013

To the Board of Directors
Alachua Learning Center, Inc.

We have audited the special purpose financial statements of Alachua Learning Center Elementary School (the School), a program of Alachua Learning Center, Inc., for the year ended June 30, 2013, and have issued our report thereon dated October 24, 2013. Professional standards require that we provide you with information about our responsibilities under generally accepted auditing standards, as well as certain information related to the planned scope and timing of our audit. We have communicated such information in our engagement letter to you dated May 6, 2013. Professional standards also require that we communicate to you the following information related to our audit.

Qualitative Aspects of Accounting Practices

Accounting Policies. Management is responsible for the selection and use of appropriate accounting policies. The significant accounting policies used by the School are described in the notes to the financial statements. No new accounting policies were adopted and the application of existing policies was not changed during the year. We noted no transactions entered into by the School during the year for which there is a lack of authoritative guidance or consensus. All significant transactions have been recognized in the financial statements in the proper period.

Accounting Estimates. Accounting estimates are an integral part of the financial statements prepared by management and are based on management's knowledge and experience about past and current events and assumptions about future events. Certain accounting estimates are particularly sensitive because of their significance to the financial statements and because of the possibility that future events affecting them may differ significantly from those expected. There are no estimates that are particularly sensitive.

Disclosures. There are no disclosures that are particularly sensitive.

Corrected and Uncorrected Misstatements. Professional standards require us to accumulate all known and likely misstatements identified during the audit, other than those that are trivial, and communicate them to the appropriate level of management. We have communicated all known and likely adjustments to management and all adjustments have been reflected in the financial statements.

Our Working Relationship with Management

Difficulties Encountered in Performing the Audit. We encountered no difficulties in dealing with management in performing and completing our audit.

Disagreements with Management. For purposes of this letter, professional standards define a disagreement with management as a financial accounting, reporting, or auditing matter, whether or not resolved to our satisfaction, that could be significant to the financial statements or the auditor's report. We are pleased to report that no such disagreements arose during the course of our audit.

Management Representations. We have requested certain representations from management that are included in the management representation letter.

Management Consultations with Other Independent Accountants. In some cases, management may decide to consult with other accountants about auditing and accounting matters, similar to obtaining a "second opinion" on certain situations. If a consultation involves application of an accounting principle to the School's financial statements or a determination of the type of auditor's opinion that may be expressed on those statements, our professional standards require the consulting accountant to check with us to determine that the consultant has all the relevant facts. To our knowledge, there were no such consultations with other accountants.

Consultations Prior to Engagement. We generally discuss a variety of matters, including the application of accounting principles and auditing standards, with management each year prior to retention as the School's auditors. However, these discussions occurred in the normal course of our professional relationship and our responses were not a condition to our retention.

* * * * *

This letter is intended solely for the information and use of management and the board of Directors of the School and is not intended to be and should not be used by anyone other than these specified parties.

Very truly yours,

Kattell and Company, P.L.

Gainesville, Florida

Kattell and Company, P.L.

Certified Public Accountants Serving the Nonprofit Community

808-B NW 16th Avenue Gainesville, Florida 32601 TEL: 352-395-6565 FAX: 352-395-6636 www.kattell.com

MANAGEMENT LETTER

To the Board of Directors
Alachua Learning Center, Inc.

We have audited the special purpose financial statements of Alachua Learning Center Elementary School (the School), a program of Alachua Learning Center, Inc., as of and for the fiscal year ended June 30, 2013, and have issued our report thereon dated October 24, 2013.

We conducted our audit in accordance with auditing standards generally accepted in the United States of America and the standards applicable to financial audits contained in Government Auditing Standards, issued by the Comptroller General of the United States. We have issued our Independent Auditors' Report on Internal Control over Financial Reporting and Compliance and Other Matters and our Schedule of Findings. Disclosures in that report and schedule should be considered in conjunction with this management letter.

Additionally, our audit was conducted in accordance with Chapter 10.850, Rules of the Auditor General, which govern the conduct of charter school and similar entity audits performed in the State of Florida. This letter includes the following information, which is not included in the aforementioned auditors' reports:

Prior Audit Findings. The Rules of the Auditor General require that we determine whether or not corrective actions have been taken to address findings and recommendations made in the preceding annual financial audit report. In that regard, we have not repeated the finding that we reported in the prior year.

Recommendations to Improve Financial Management. Rules of the Auditor General require that we address any recommendations to improve financial management. We did not have any such recommendations.

Immaterial Noncompliance. Rules of the Auditor General require that we address violations of laws, regulations, contract or grant agreements, or abuse that have occurred, or are likely to have occurred, that have an effect on the financial statements that is less than material but more than inconsequential. We did not have any such findings.

Other Matters. Section 10.854(1)(e)4, Rules of the Auditor General, provides that the auditor may report other matters that are inconsequential to the determination of financial statement amounts. There are no other matters that, based on our professional judgment, will be included in this management letter.

Name. The name or official title of the School is Alachua Learning Center Elementary School.

Financial Emergency. Rules of the Auditor General require a statement be included as to whether or not the School has met one or more of the conditions described in Section 218.503(1), Florida Statutes, and identification of the specific condition(s) met. We determined that the School did not meet any of the conditions described in Section 218.503(1), Florida Statutes.

Financial Condition Assessment. Rules of the Auditor General require that we apply financial condition assessment procedures. It is management's responsibility to monitor the School's financial condition, and our financial condition assessment was based in part on representations made by management and the review of financial information provided by management. We did not identify deteriorating financial conditions.

Pursuant to Chapter 119, Florida Statutes, the management letter is a public record and its distribution is not limited. Auditing standards generally accepted in the United States of America require us to indicate that this letter is intended solely for the information and use of the Florida Legislative Auditing Committee, members of the Florida Senate and the Florida House of Representatives, the Florida Auditor General, federal and other granting agencies, the District School Board, and management and the Board of Directors of the School, and is not intended to be and should not be used by anyone other than these specified parties.

Thank you for the cooperation and courtesies extended to us during the course of the audit. Please let us know if you have any questions or comments concerning this letter, our accompanying reports, or any other matters.

Kattell and Company, P.L.

October 24, 2013
Gainesville, Florida

Kattell and Company, P.L.

Certified Public Accountants Serving the Nonprofit Community

808-B NW 16th Avenue Gainesville, Florida 32601 TEL: 352-395-6565 FAX: 352-395-6636 www.kattell.com

REPORT ON INTERNAL CONTROL OVER FINANCIAL REPORTING AND ON COMPLIANCE AND OTHER MATTERS

To the Board of Directors
Alachua Learning Center, Inc.

We have audited, in accordance with auditing standards generally accepted in the United States of America and the standards applicable to financial audits contained in *Government Auditing Standards*, issued by the Comptroller General of the United States, the financial statements of the governmental activities and each major fund of Alachua Learning Center Elementary School (the School), as of and for the year ended June 30, 2013, and the related notes to financial statements, which collectively comprise the School's basic financial statements, and have issued our report thereon dated October 24, 2013.

Internal Control Over Financial Reporting

In planning and performing our audit of the financial statements, we considered the School's internal control over financial reporting (internal control) to determine the audit procedures that are appropriate in the circumstances for the purpose of expressing our opinions on the financial statements but not for the purpose of expressing an opinion on the effectiveness of the School's internal control. Accordingly, we do not express an opinion on the effectiveness of the School's internal control.

A deficiency in internal control exists when the design or operation of a control does not allow management or employees, in the normal course of performing their assigned functions, to prevent, or detect and correct misstatements on a timely basis. A material weakness is a deficiency, or combination of deficiencies, in internal control, such that there is a reasonable possibility that a material misstatement of the School's financial statements will not be prevented, or detected and corrected on a timely basis. A significant deficiency is a deficiency, or a combination of deficiencies, in internal control that is less severe than a material weakness, yet important enough to merit attention by those charged with governance.

Our consideration of internal control was for the limited purpose described in the first paragraph of this section and was not designed to identify all deficiencies in internal control that might be material weaknesses or significant deficiencies. Given these limitations, during our audit we did not identify any deficiencies in internal control that we consider to be material weaknesses. However, material weaknesses may exist that have not been identified. We did not identify any deficiencies in internal control that we consider to be material weaknesses, as defined above.

Compliance and Other Matters

As part of obtaining reasonable assurance about whether the School's financial statements are free of material misstatement, we performed tests of its compliance with certain provisions of laws, regulations, contracts and grants, noncompliance with which could have a direct and material effect on the determination of financial statement amounts. However, providing an opinion on compliance with those provisions was not an objective of our audit and, accordingly, we do not express such an opinion. The results of our tests disclosed no instances of noncompliance or other matters that are required to be reported under *Government Auditing Standards*.

School's Response to Findings

The School's responses to the findings identified in our audit are described in the accompanying letter from the School. The School's response was not subjected to the auditing procedures applied in the audit of the financial statements and, accordingly, we express no opinion on it.

Purpose of this Report

The purpose of this report is solely to describe the scope of our testing of internal control and compliance and the results of that testing, and not to provide an opinion on the effectiveness of the School's internal control or on compliance. This report is an integral part of an audit performed in accordance with *Government Auditing Standards* in considering the School's internal control and compliance. Accordingly, this communication is not suitable for any other purpose.

* * * * *

As required by the Rules of the Auditor General of the State of Florida, we noted certain matters that we reported to management of the School in the management letter dated October 24, 2013.

Kattell and Company, P.L.

October 24, 2013
Gainesville, Florida

.....

PO Box 1389
11100 SR 235
Alachua FL 32616
(386) 418-2080
Fax: 418-4116

Alachua Learning Center

October 24, 2013

Kattel and Company, P.L.
808-B NW 16th Ave
Gainesville, FL 32601


RE: Alachua Learning Center Elementary School Audit 6/2013

Dear Sirs/Madame:

We have received the results of the June 30, 2013 audit report of our school conducted by your firm.

We appreciate your professionalism and look forward to working with you again.

Sincerely,



Tom Allin
Administrative Director

Emphasizing life skills and values in a multi-cultural context